

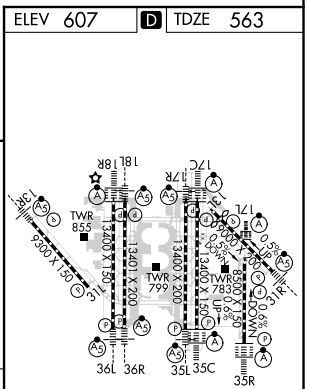
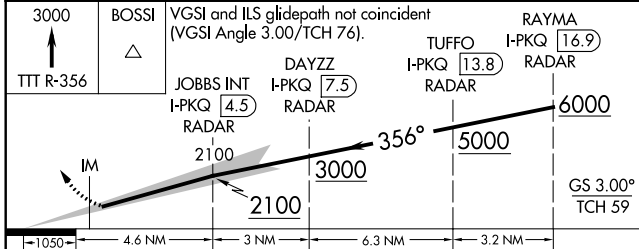
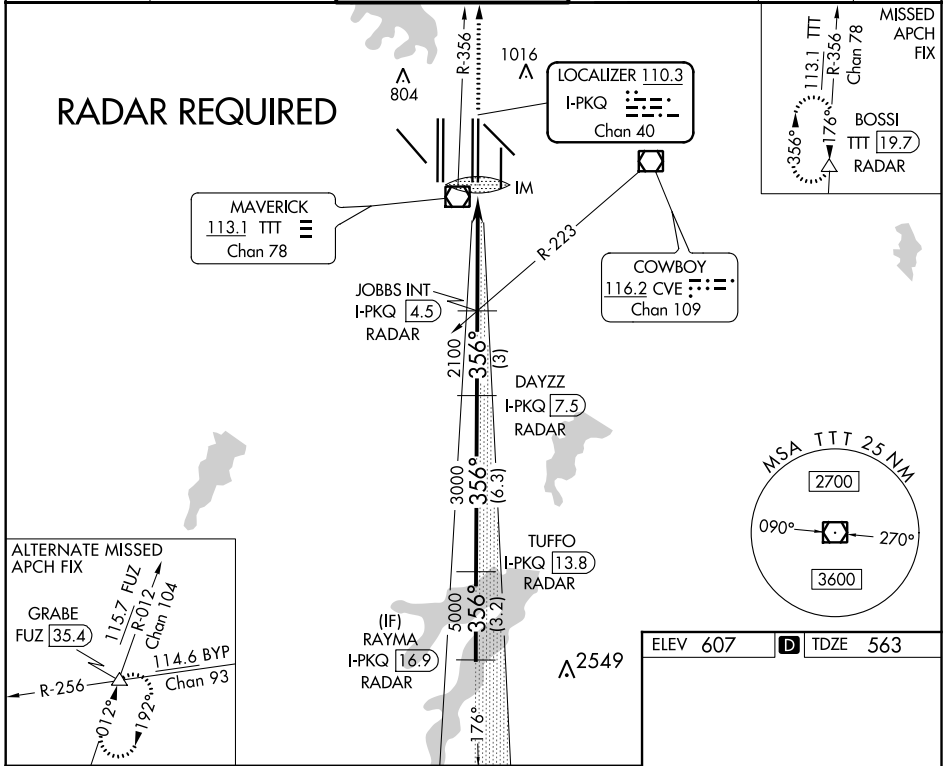
LOC/DME I-PKQ 110.3 Chan 40	APP CRS 356°	Rwy Idg TDZE Apt Elev	13400 563 607
--	------------------------	-----------------------------	--

ILS RWY 35C (SA CAT I)

DALLAS-FORT WORTH INTL (DFW)

DME or RADAR required. Simultaneous approach authorized with Rwy 35R, Rwy 36L/R. Requires specific OPSPEC, MSPEC, or LOA approval and use of HUD to DA.	ALSF-2 	MISSED APPROACH: Climb to 3000 on TTT VOR/DME R-356 to BOSSI/TTT 19.7 DME/RADAR and hold.	
		D-ATIS ARR 123.775 DEP 135.925	REGIONAL APP CON 127.075

CLNC DEL 128.25	CPDLC
---------------------------	-------



CATEGORY	A	B	C	D
S-ILS 35C	RA 153/14		150 DA 713	

SA CATEGORY I ILS - SPECIAL AIRCREW & AIRCRAFT CERTIFICATION REQUIRED

HIRL all Rwys
 REIL Rwy 13L and 31L
 TDZ/CL all Rwys except 13L and 31L

SC-2, 02 DEC 2021 to 30 DEC 2021

SC-2, 02 DEC 2021 to 30 DEC 2021