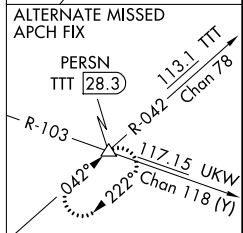
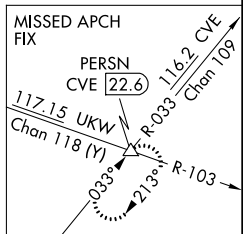
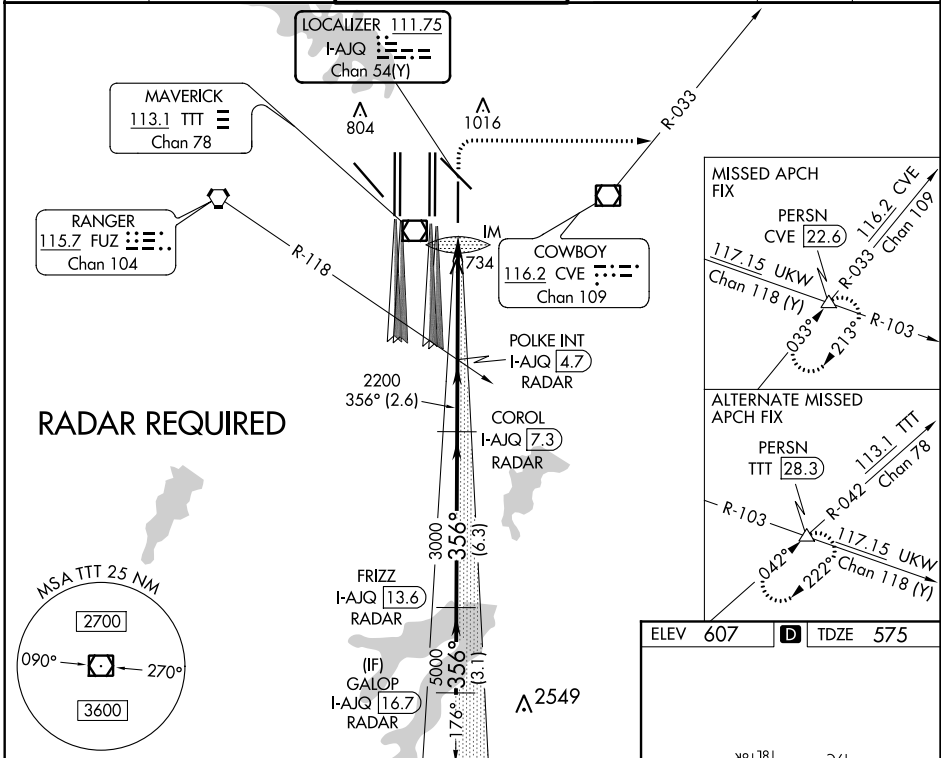


LOC/DME I-AJQ <b>111.75</b> Chan 54(Y)	APP CRS <b>356°</b>	Rwy Idg TDZE Apt Elev <b>8500</b> <b>575</b> <b>607</b>
--	------------------------	--

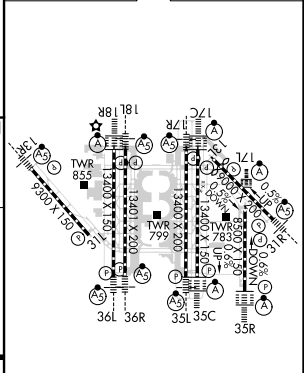
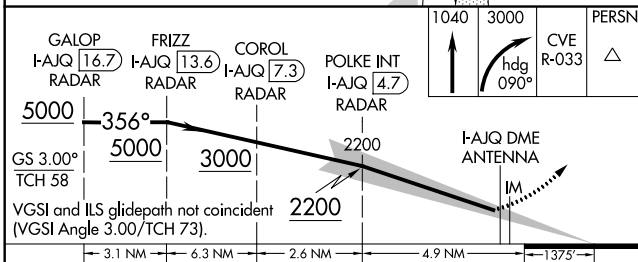
# ILS RWY 35R (SA CAT I)

DALLAS-FORT WORTH INTL (DFW)

D-ATIS ARR <b>123.775</b> DEP <b>135.925</b>		REGIONAL APP CON <b>119.4</b>	DFW TOWER <b>126.55 127.5</b> EAST <b>124.15 134.9</b> WEST	GND CON <b>121.65 121.8</b> EAST <b>121.85</b> WEST	CLNC DEL <b>128.25</b>	CPDLC
--	--	----------------------------------	---	---	---------------------------	-------



ELEV <b>607</b>	<b>D</b> TDZE <b>575</b>
-----------------	--------------------------



CATEGORY	A	B	C	D
S-ILS 35R	RA 144/14 150 DA 725			

## SA CATEGORY I ILS - SPECIAL AIRCREW & AIRCRAFT CERTIFICATION REQUIRED

SC-2, 02 DEC 2021 to 30 DEC 2021

SC-2, 02 DEC 2021 to 30 DEC 2021