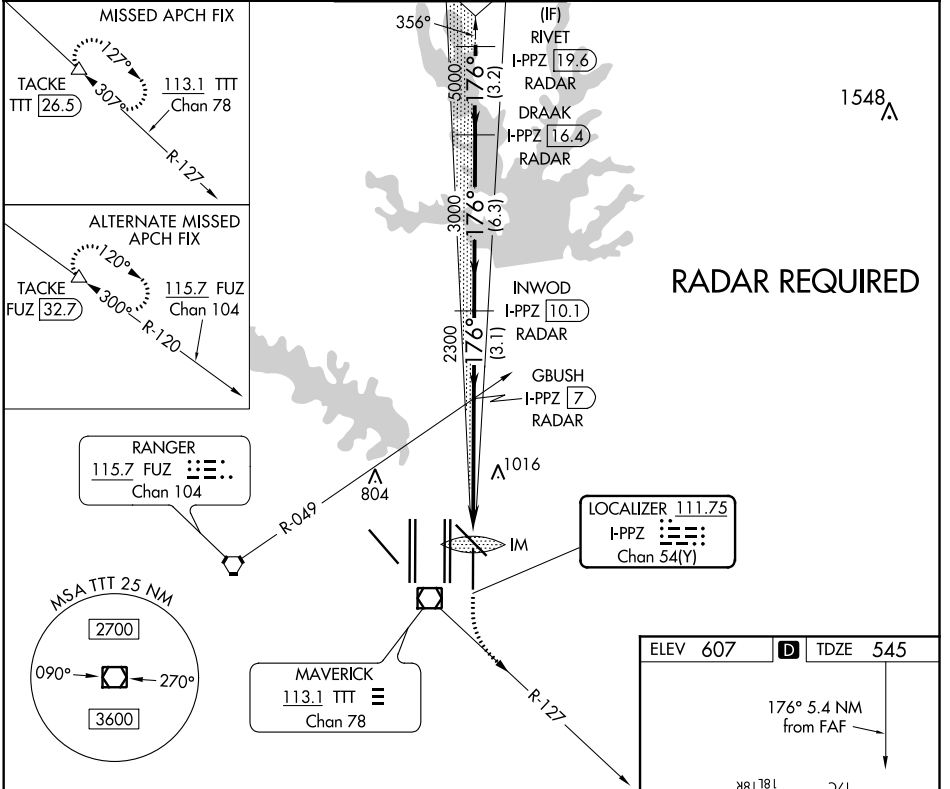


LOC/DME I-PPZ 111.75 Chan 54 (Y)	APP CRS 176°	Rwy Idg TDZE Apt Elev	8500 545 607
---	------------------------	-----------------------------	---

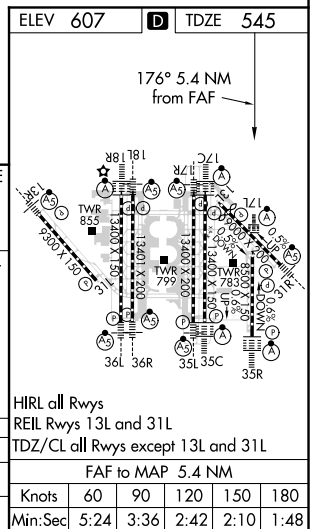
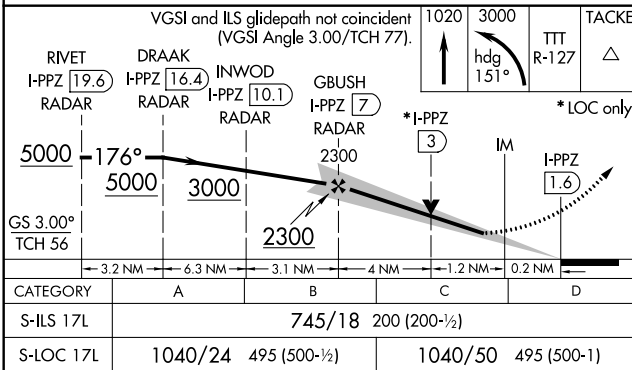
ILS or LOC RWY 17L

DALLAS-FORT WORTH INTL (DFW)

<p>Simultaneous approach authorized with Rwy 17C/R and Rwy 18L/R. DME required.</p>	<p>ALSF-2</p>	<p>MISSED APPROACH: Climb to 1020 then climbing left turn to 3000 on heading 151° and TTT VOR/DME R-127 to TACKE/TTT 26.5 DME and hold.</p>			
<p>D-ATIS ARR 123.775 DEP 135.925</p>	<p>REGIONAL APP CON 119.4</p>	<p>DFW TOWER 126.55 127.5 EAST 124.15 134.9 WEST</p>	<p>GND CON 121.65 121.8 EAST 121.85 WEST</p>	<p>CLNC DEL 128.25</p>	<p>CPDLC</p>



RADAR REQUIRED



SC-2, 02 DEC 2021 to 30 DEC 2021

SC-2, 02 DEC 2021 to 30 DEC 2021