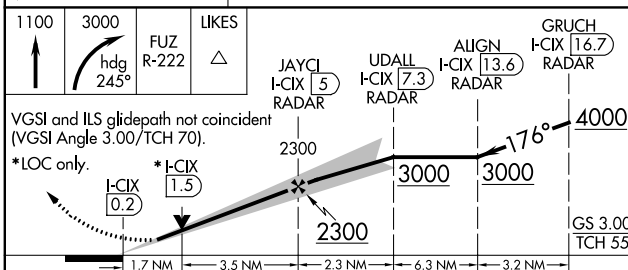
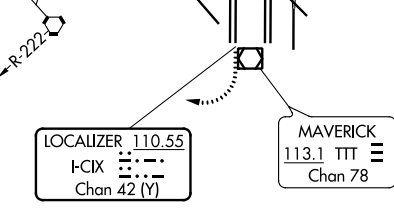
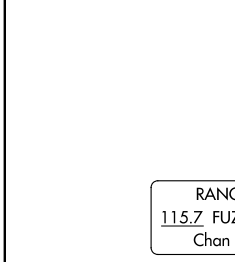
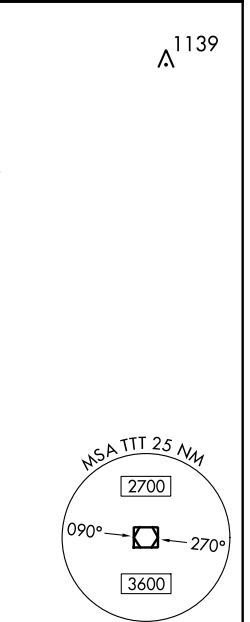
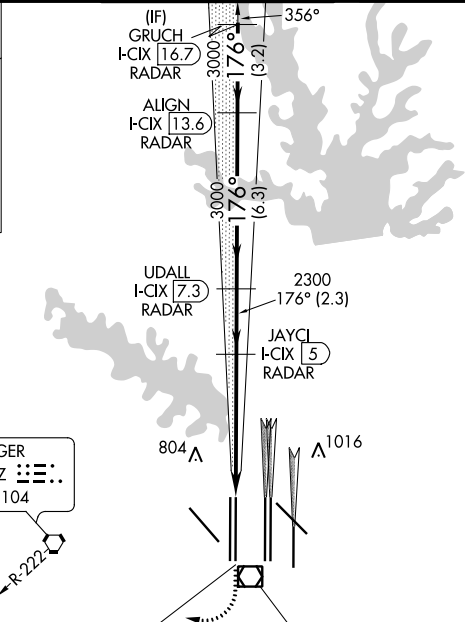
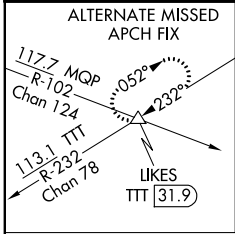


LOC/DME I-CIX 110.55 Chan 42 (Y)	APP CRS 176°	Rwy Idg TDZE Apt Elev	18L 13401 602 606	18R 13400 606 606
--	------------------------	-----------------------------	---	---

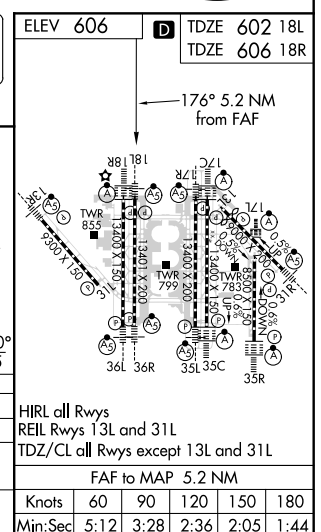
ILS or LOC RWY 18L

DALLAS-FORT WORTH INTL (DFW)

RADAR required for procedure entry. DME or RADAR required. Simultaneous approach authorized with Rwy 17L/C/R. For inop ALS, increase S-LOC 18L Cat C/D and Sidestep 18R Cat C/D visibility to 1 1/4 mile. Inop table does not apply to Sidestep 18R Cats A and B.		Rwy 18L MALSR	Rwy 18R ALS-F-2	MISSED APPROACH: Climb to 1100, then climbing right turn to 3000 on heading 245° and FUE VORTAC R-222 to LIKES INT/FUZ 27 DME and hold.		
D-ATIS ARR 123.775 DEP 135.925	REGIONAL APP CON 118.425	DFW TOWER 126.55 127.5 EAST 124.15 134.9 WEST		GND CON 121.65 121.8 EAST 121.85 WEST	CLNC DEL 128.25	CPDLC



CATEGORY	A	B	C	D
S-ILS 18L	802/18 200 (200-1/2)			
S-LOC 18L	1220/24 618 (700-1/2)	1220-1 3/8 618 (700-1 3/8)		
SIDESTEP 18R	1220/50 614 (700-1)	1220-1 3/8 614 (700-1 3/8)	1220-1 1/2 614 (700-1 1/2)	



SC-2, 02 DEC 2021 to 30 DEC 2021

SC-2, 02 DEC 2021 to 30 DEC 2021

FAF to MAP 5.2 NM					
Knots	60	90	120	150	180
Min:Sec	5:12	3:28	2:36	2:05	1:44