

LOC/DME I-RRR <b>110.9</b> Chan <b>46</b>	APP CRS <b>311°</b>	Rwy Idg TDZE Apt Elev	<b>8373</b> <b>523</b> <b>607</b>
---	------------------------	-----------------------------	---

# ILS or LOC RWY 31R

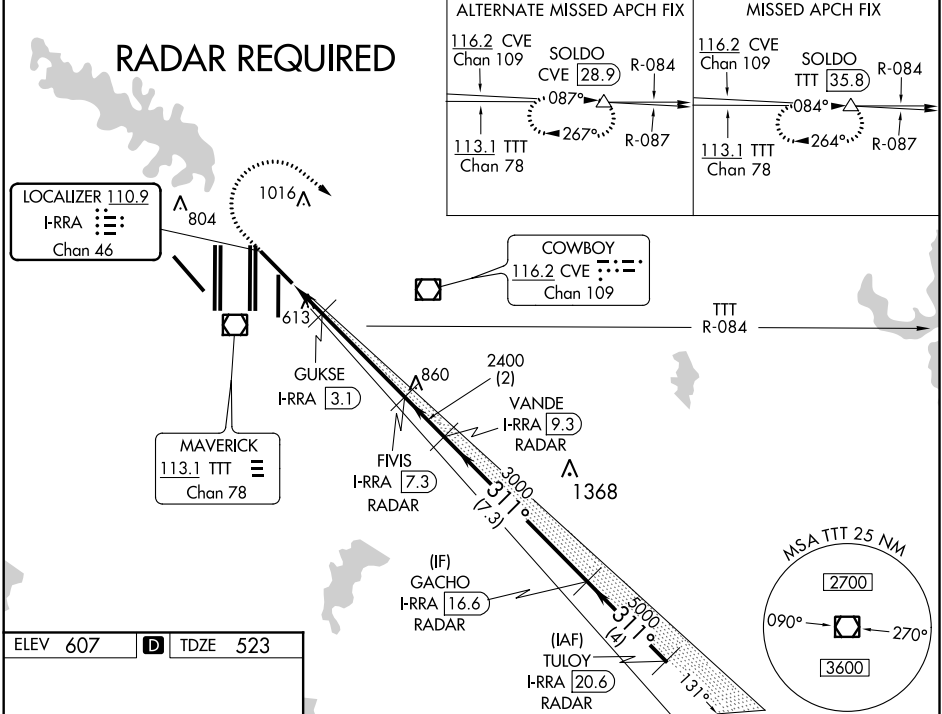
DALLAS-FORT WORTH INTL (DFW)

Simultaneous approach authorized. DME required.  
 For inop ALS increase S-LOC 31R GUKSE FIX minimums  
 Cat C/D visibility to RVR 5500.

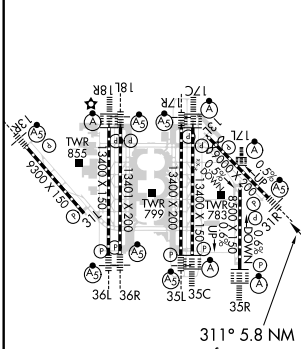


MISSED APPROACH: Climb to 1100 then climbing  
 right turn to 3000 on heading 125° and TTT VOR/  
 DME R-084 to SOLD0/TTT 35.8 DME and hold.

D-ATIS ARR <b>123.775</b> DEP <b>135.925</b>	REGIONAL APP CON <b>135.5 125.2</b>	DFW TOWER <b>126.55 127.5 EAST</b> <b>124.15 134.9 WEST</b>	GND CON <b>121.65 121.8 EAST</b> <b>121.85 WEST</b>	CLNC DEL <b>128.25</b>	CPDLC
--	--	---	---	---------------------------	-------



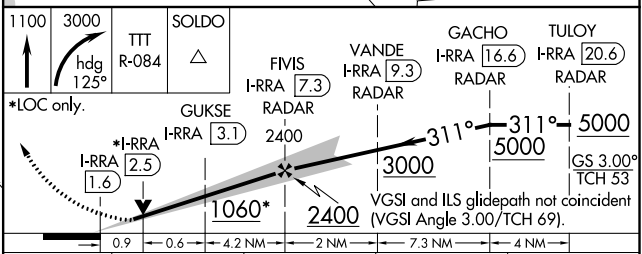
ELEV <b>607</b>	<b>D</b>	TDZE <b>523</b>
-----------------	----------	-----------------



HIRL all Rwy's  
 REIL Rwy's 13L and 31L  
 TDZ/CL all Rwy's except 13L and 31L

FAF to MAP 5.8 NM

Knots	60	90	120	150	180
Min:Sec	5:48	3:52	2:54	2:19	1:56



CATEGORY	A	B	C	D
S-ILS 31R	723/18		200 (200-½)	
S-LOC 31R	1060/24	537 (500-½)	1060/55	537 (500-1¼)
GUKSE FIX MINIMUMS				
S-LOC 31R	880/24	357 (300-½)	880/30	357 (300-¾)

SC-2, 02 DEC 2021 to 30 DEC 2021

SC-2, 02 DEC 2021 to 30 DEC 2021