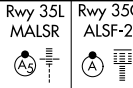


LOC/DME I-UWX <b>111.35</b> Chan <b>50 (Y)</b>	APP CRS <b>356°</b>	Rwy 35L Idg <b>13400</b> TDZE <b>564</b> Apt Elev <b>607</b>	Rwy 35C Idg <b>13400</b> TDZE <b>563</b> Apt Elev <b>607</b>
--	------------------------	--	--

# ILS or LOC RWY 35L

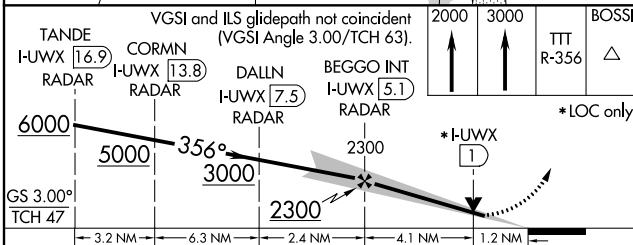
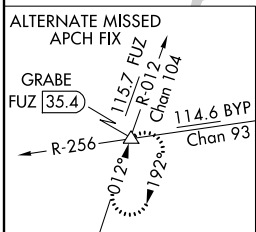
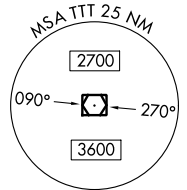
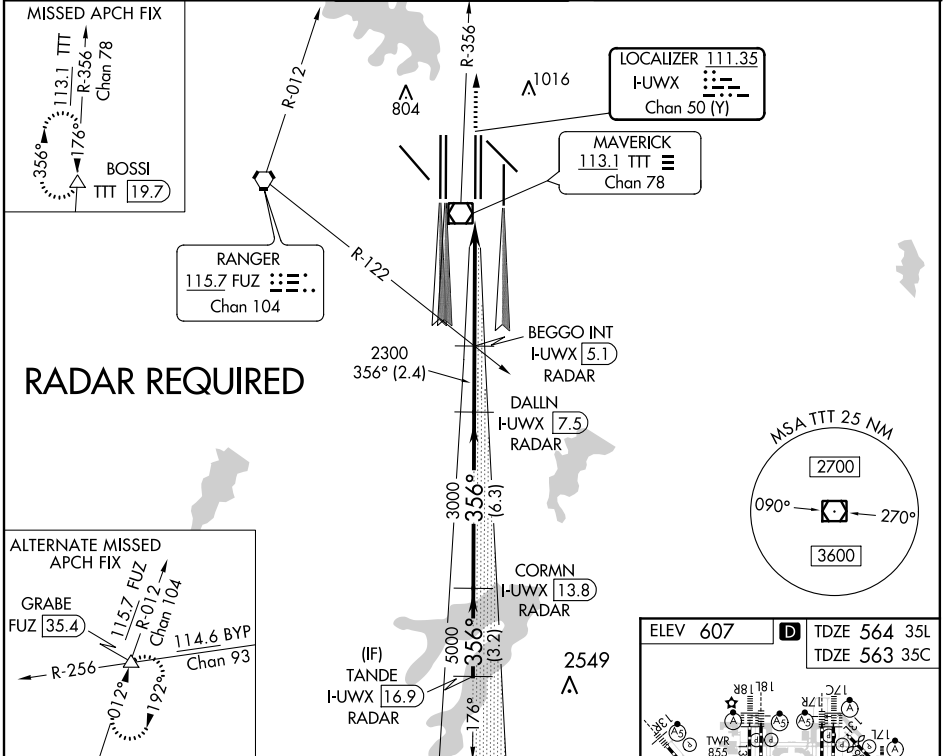
DALLAS-FORT WORTH INTL (DFW)

▼ DME or RADAR required. Simultaneous approach authorized with Rwy 36 L/R and Rwy 35R.  
Inop table does not apply to Sidestep Rwy 35C.

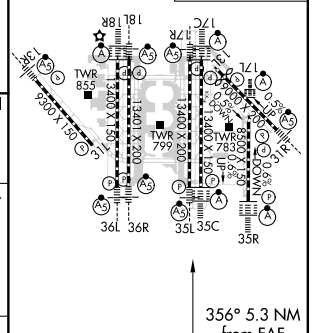


MISSED APPROACH: Climb to 2000 then climb to 3000 on TTT VOR/DME R-356 to BOSSI/TTT 19.7 DME and hold.

D-ATIS ARR <b>123.775</b> DEP <b>135.925</b>	REGIONAL APP CON <b>127.075</b>	DFW TOWER <b>126.55 127.5</b> EAST <b>124.15 134.9</b> WEST		GND CON <b>121.65 121.8</b> EAST <b>121.85</b> WEST	CLNC DEL <b>128.25</b>	CPDLC
--	------------------------------------	---	--	---	---------------------------	-------



ELEV 607	TDZE 564 35L
	TDZE 563 35C



GS 3.00° TCH 47	3.2 NM	6.3 NM	2.4 NM	4.1 NM	1.2 NM
TANDE I-UWX 16.9 RADAR	CORMN I-UWX 13.8 RADAR	DALLIN I-UWX 7.5 RADAR	BEGGO INT I-UWX 5.1 RADAR	TTT R-356	BOSSI △
*LOC only					
CATEGORY	A	B	C	D	
S-ILS 35L	764/18 200 (200-1/2)				
S-LOC 35L	1000/24	436 (400-1/2)	1000/40	436 (400-3/4)	
SIDESTEP 35C	1000-1	437 (400-1)	1000-1 1/2	437 (400-2)	

HIRL all Rws					
REIL Rws 13L and 31L					
TDZ/CL all Rws except 13L, and 31L					
FAF to MAP 5.3 NM					
Knots	60	90	120	150	180
Min:Sec	5:18	3:32	2:39	2:07	1:46

SC-2, 02 DEC 2021 to 30 DEC 2021

SC-2, 02 DEC 2021 to 30 DEC 2021