

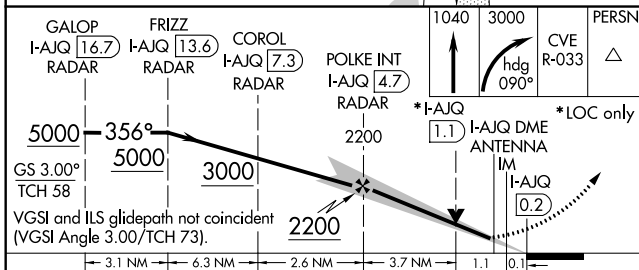
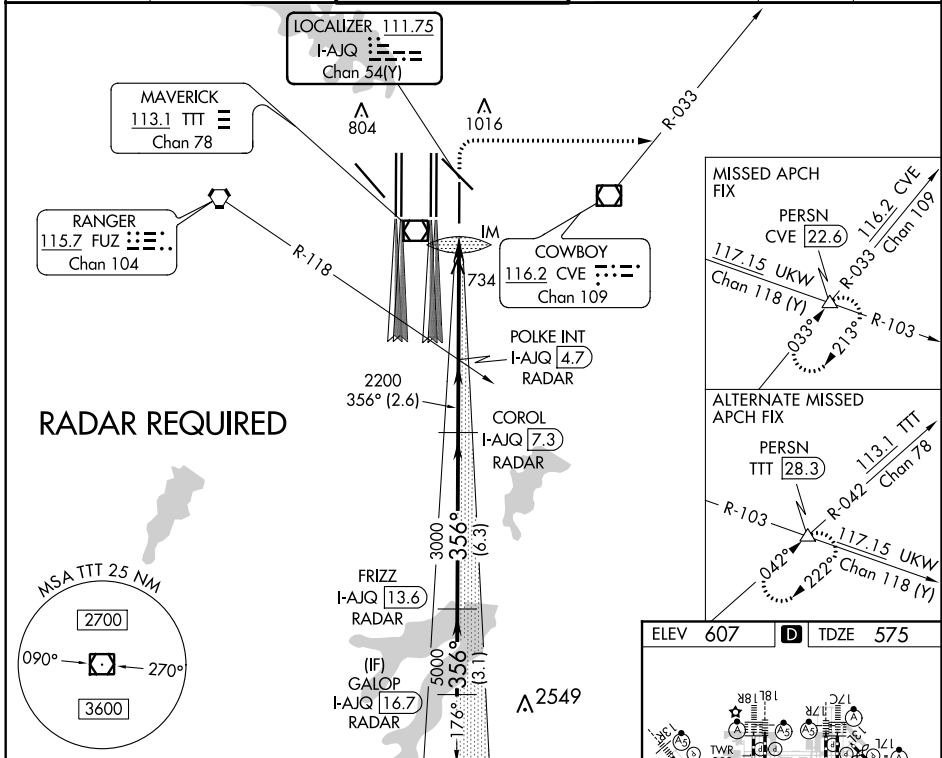
| | | |
|--|------------------------|--|
| LOC/DME I-AJQ 111.75 Chan 54(Y) | APP CRS 356° | Rwy Idg TDZE Apt Elev 8500 575 607 |
|--|------------------------|--|

ILS or LOC RWY 35R

DALLAS-FORT WORTH INTL (DFW)

| | | |
|---|--------|---|
| Simultaneous approach authorized with Rwy 36L/R and Rwy 35L/C. DME required. | ALSF-2 | MISSED APPROACH: Climb to 1040 then climbing right turn to 3000 on heading 090° and CVE VOR/DME R-033 to PERSN/CVE 22.6 DME and hold. |
| | | |

| | | | | | |
|--|----------------------------------|---|---|---------------------------|-------|
| D-ATIS ARR 123.775 DEP 135.925 | REGIONAL APP CON 119.4 | DFW TOWER 126.55 127.5 EAST 124.15 134.9 WEST | GND CON 121.65 121.8 EAST 121.85 WEST | CLNC DEL 128.25 | CPDLC |
|--|----------------------------------|---|---|---------------------------|-------|



ELEV 607 TDZE 575

356° 4.9 NM from FAF

HIRL all Rwys

REIL Rwy 31L and 31R

TDZ/CL all Rwys except 13L, and 31L

FAF to MAP 4.9 NM

| | | | | | |
|---------|------|------|------|------|------|
| Knots | 60 | 90 | 120 | 150 | 180 |
| Min:Sec | 4:54 | 3:16 | 2:27 | 1:58 | 1:38 |

| | | | | |
|-----------|--------------------|-------------|---------|-------------|
| CATEGORY | A | B | C | D |
| S-ILS 35R | 775/18 200 (200-½) | | | |
| S-LOC 35R | 1040/24 | 465 (500-½) | 1040/50 | 465 (500-1) |

SC-2, 02 DEC 2021 to 30 DEC 2021

SC-2, 02 DEC 2021 to 30 DEC 2021