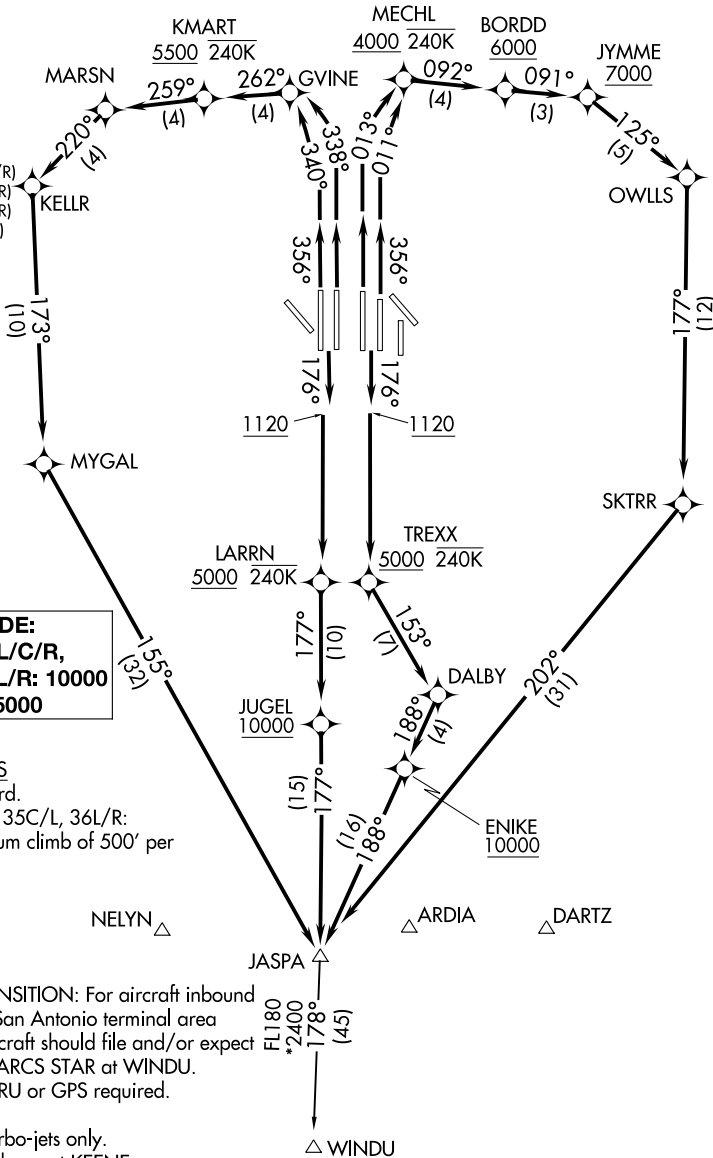


# JASPA SIX DEPARTURE (RNAV)

D-ATIS DEP 135.925  
 CLNC DEL 128.25  
 CPDLC  
 GND CON  
 121.65 121.8 (EAST)  
 121.85 (WEST)  
 DFW TOWER  
 126.55 127.5 (EAST)  
 124.15 134.9 (WEST)  
 REGIONAL DEP CON  
 125.125 353.95 (Rwy 17C/R)  
 125.125 353.95 (Rwy 18L/R)  
 126.475 363.15 (Rwy 36L/R)  
 118.55 290.35 (Rwy 35L/C)



**TOP ALTITUDE:**  
**RWY 13L/R, 17L/C/R,**  
**18L/R, 35L/C/R, 36L/R: 10000**  
**RWY 31L/R: 5000**

### TAKEOFF MINIMUMS

Rwys 31L/R: Standard.  
 Rwys 17C/R, 18L/R, 35C/L, 36L/R:  
 Standard with minimum climb of 500' per  
 NM to 1120.

NOTE: WINDU TRANSITION: For aircraft inbound  
 to Austin or San Antonio terminal area  
 airports. Aircraft should file and/or expect  
 BLEWE or MARCS STAR at WINDU.

NOTE: DME/DME/IRU or GPS required.

NOTE: RNAV 1.

NOTE: For use by turbo-jets only.

NOTE: Props file and expect KEENE or  
 TRI-GATE DEPARTURE.

NOTE: RADAR required.

NOTE: Chart not to scale.

(NARRATIVE ON FOLLOWING PAGE)

# JASPA SIX DEPARTURE (RNAV)

(JASPA6.JASPA) 10OCT19

DALLAS-FORT WORTH, TEXAS  
 DALLAS-FORT WORTH INTL (DFW)

SC-2, 02 DEC 2021 to 30 DEC 2021

SC-2, 02 DEC 2021 to 30 DEC 2021