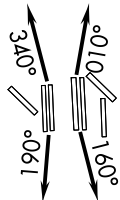


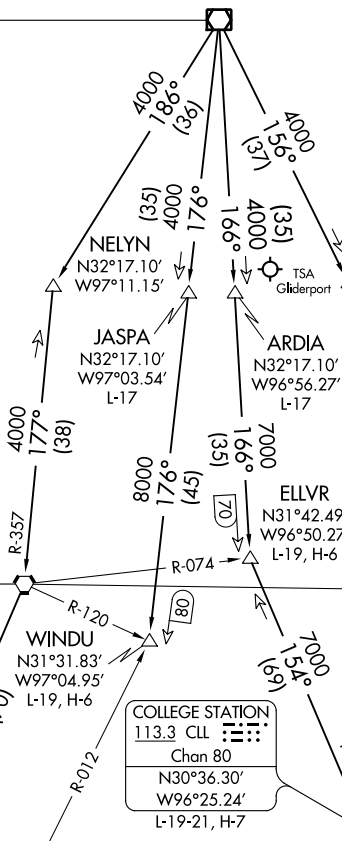
JOE POOL THREE DEPARTURE

TOP ALTITUDE:
RWYS 13L/R, 17L/C/R, 18L/R,
35L/C/R, 36L/R: 10000
RWYS 31L/R: 5000

D-ATIS DEP 135.925
CLNC DEL 128.25
CPDLC
GND CON
121.65 121.8 (EAST)
121.85 (WEST)
DFW TOWER
126.55 127.5 (EAST)
124.15 134.9 (WEST)
REGIONAL DEP CON
125.125 353.95 (Rwys 17C/R, 18L/R)
126.475 363.15 (Rwys 36R/L)
118.55 290.35 (Rwys 35L/C)



MAVERICK
113.1 TTT
Chan 78
N32°52.15'
W97°02.43'



WACO
115.3 ACT
Chan 100
N31°39.73'
W97°16.14'
L-19, H-6

WINDU
N31°31.83'
W97°04.95'
L-19, H-6

COLLEGE STATION
113.3 CLL
Chan 80
N30°36.30'
W96°25.24'
L-19-21, H-7

HOARY
N30°34.63'
W97°46.52'
L-19-21, H-7

LEONA
110.8 LOA
Chan 45

BILEE
N31°09.87'
W96°22.89'
L-19-21, H-6

NOTE: RADAR and DME required.
NOTE: Props: Expect KEENE or TRI-GATE departure.
NOTE: Maintain 240K until leaving 5000.

TAKEOFF MINIMUMS
Rwys 13L/R, 17L/C/R, 18L/R, 31L/R,
35L/C, 36L/R: Standard.
Rwy 35R: Standard with a minimum climb
of 240' per NM to 1200.

NAVASOTA
115.9 TNV
Chan 106

(NARRATIVE ON FOLLOWING PAGE)

NOTE: Chart not to scale.

SC-2, 02 DEC 2021 to 30 DEC 2021

SC-2, 02 DEC 2021 to 30 DEC 2021

JOE POOL THREE DEPARTURE