

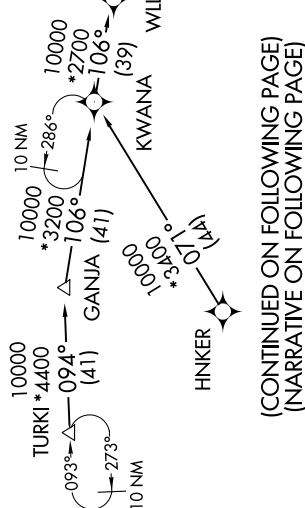
JOVEM FOUR ARRIVAL (RNAV) Transition Routes

SC-2, 02 DEC 2021 to 30 DEC 2021

NOTE: For use when DFW is operating in a north flow. When DFW is operating in a south flow, file and expect the VKTRY RNAV STAR.

- NOTE: RADAR required.
- NOTE: RNAV 1.
- NOTE: DME/DME/IRU or GPS required.
- NOTE: Turbojet aircraft only.

D-ATIS ARR 123.775 REGIONAL APP CON 119.875 284.65
<u>BELFR TRANSITION (BELFR.JOVEM4):</u> (ATC assigned only.)
<u>FAWNT TRANSITION (FAWNT.JOVEM4):</u> (ATC assigned only.)
<u>HNKER TRANSITION (HNKER.JOVEM4):</u> (ATC assigned only.)
<u>HOFF TRANSITION (HOFF.JOVEM4):</u> (ATC assigned only.)
<u>IBAKE TRANSITION (IBAKE.JOVEM4):</u> (ATC assigned only.)
<u>KLAWW TRANSITION (KLAWW.JOVEM4):</u> (ATC assigned only.)
<u>MDANO TRANSITION (MDANO.JOVEM4):</u> (ATC assigned only.)
<u>RBUKL TRANSITION (RBUKL.JOVEM4):</u> (For OKC Terminal Area Departures only.)
<u>TURKI TRANSITION (TURKI.JOVEM4):</u> (ATC assigned only.)
<u>TYPTN TRANSITION (TYPTN.JOVEM4):</u> (ATC assigned only.)
<u>WILTR TRANSITION (WILTR.JOVEM4):</u> (ATC assigned only.)



(CONTINUED ON FOLLOWING PAGE)
(NARRATIVE ON FOLLOWING PAGE)

JOVEM FOUR ARRIVAL (RNAV) Transition Routes

NOTE: Chart not to scale.

SC-2, 02 DEC 2021 to 30 DEC 2021

See following page for Arrival Route.