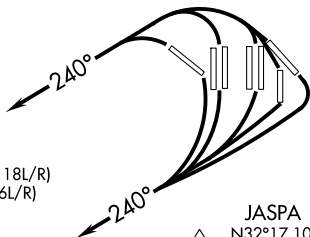


# KEENE THREE DEPARTURE

**TOP ALTITUDE:  
2000**

D-ATIS DEP  
 135.925  
 CLNC DEL  
 128.25  
 CPDLC  
 GND CON  
 121.65 121.8 (EAST)  
 121.85 (WEST)  
 DFW TOWER  
 126.55 127.5 (EAST)  
 124.15 134.9 (WEST)  
 REGIONAL DEP CON  
 135.975 379.9 (Rwys 13L/R, 17L/C/R, 18L/R)  
 118.1 306.95 (Rwys 31L/R, 35L/C/R, 36L/R)



**JASPA**  
 △ N32°17.10'  
 W097°03.54'

**WACO**  
 115.3 ACT ---  
 Chan 100  
 N31°39.73'-W097°16.14'  
 L-19, H-6

**WINDU**  
 N31°31.83' △  
 W097°04.95'  
 H-6

**ELLVR**  
 N31°42.49'  
 △ W096°50.27'  
 H-6

**TORNH**  
 N31°31.22'  
 W096°30.88'  
 H-6  
 △

**BILEE**  
 △ N31°09.87'  
 W096°22.89'  
 L-19-21, H-6

NOTE: For non-Turbojet aircraft only.  
 NOTE: RADAR required.  
 NOTE: JASPA TRANSITION: ATC assigned.

**COLLEGE STATION**  
 113.3 CLL ---  
 Chan 80  
 N30°36.30'-W096°25.24'  
 L-19-21, H-7

**NAVASOTA**  
 115.9 TNV ---  
 Chan 106  
 N30°17.31'-W096°03.49'  
 L-19-21, H-7

### TAKEOFF MINIMUMS

Rwys 13L/R, 17L/C/R, 18L/R, 31L/R, 35L/C, 36L/R: Standard.  
 Rwy 35R: 300-1½ or standard with minimum climb of 221' per NM to 800, or alternatively, with standard takeoff minimums and a normal 200' per NM climb gradient, takeoff must occur no later than 1700' prior to DER.

NOTE: Chart not to scale.



### DEPARTURE ROUTE DESCRIPTION

#### NON-TURBOJET AIRCRAFT ONLY

**TAKEOFF ALL RUNWAYS:** Climb on heading 240° for RADAR vectors to appropriate fix. Maintain 2000 and expect filed altitude 10 minutes after departure.