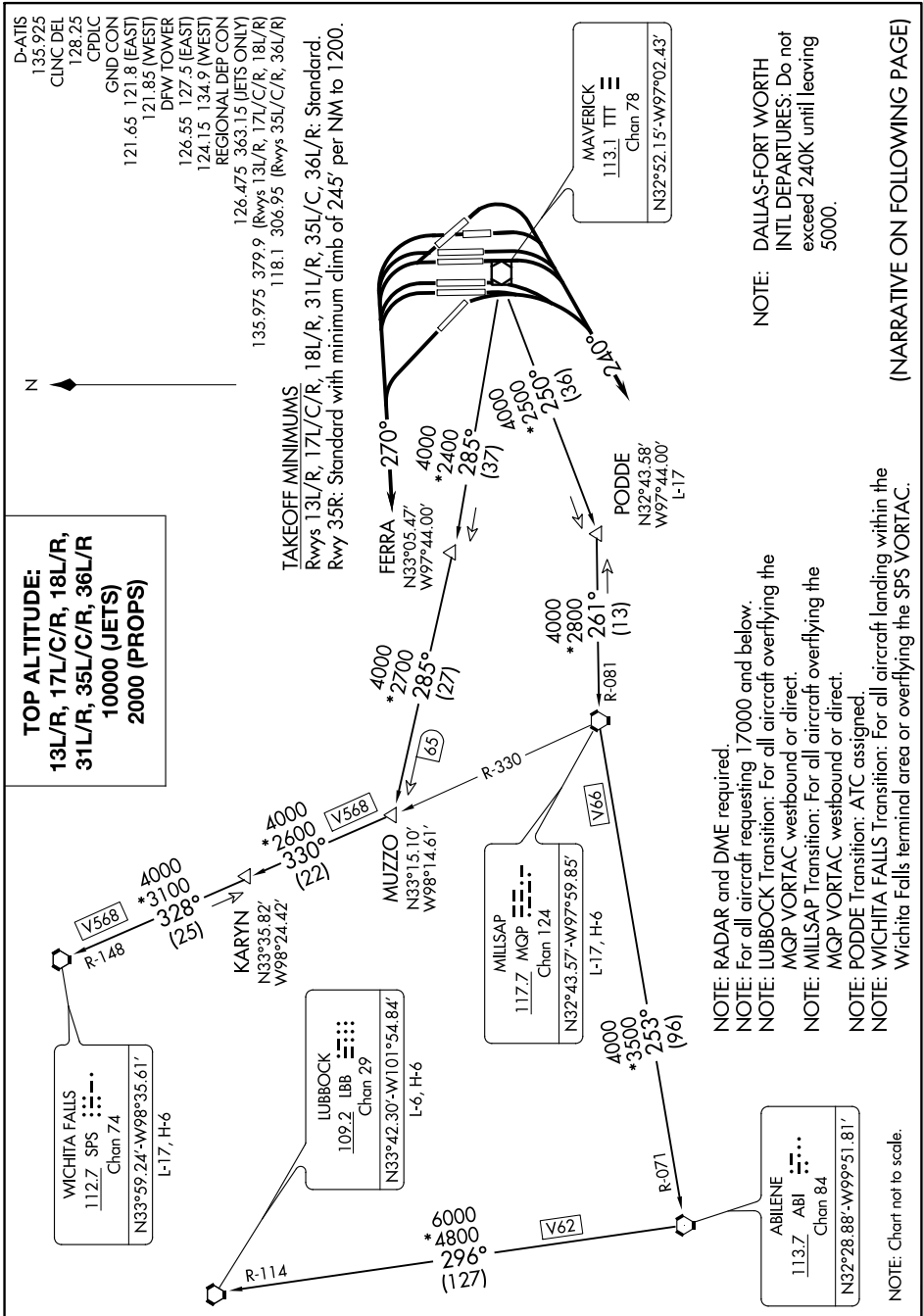


KINGDOM ONE DEPARTURE

SC-2, 02 DEC 2021 to 30 DEC 2021



TOP ALTITUDE:
13L/R, 17L/C/R, 18L/R,
31L/R, 35L/C/R, 36L/R
10000 (JETS)
2000 (PROPS)

D-ATIS
 135.925
 CINC DEL
 128.25
 CPDLC
 GND CON
 121.65 121.8 (EAST)
 121.85 (WEST)
 DFW TOWER
 126.55 127.5 (EAST)
 124.15 134.9 (WEST)
 REGIONAL DEP CON
 126.475 363.15 (JETS ONLY)
 135.975 379.9 (Rwys 13L/R, 17L/C/R, 18L/R)
 118.1 306.95 (Rwys 35L/C/R, 36L/R)

TAKEOFF MINIMUMS
 Rwys 13L/R, 17L/C/R, 18L/R, 31L/R, 35L/C, 36L/R: Standard.
 Rwy 35R: Standard with minimum climb of 245' per NIM to 1200.

MAVERICK
 113.1 TTT
 Chan 78
 N32°52.15'-W97°02.43'

NOTE: DALLAS-FORT WORTH
 INTL DEPARTURES: Do not
 exceed 240K until leaving
 5000.

(NARRATIVE ON FOLLOWING PAGE)

NOTE: RADAR and DME required.
 NOTE: For all aircraft requesting 17000 and below.
 NOTE: LUBBOCK Transition: For all aircraft overflying the
 MGP VORTAC westbound or direct.
 NOTE: MILLSAP Transition: For all aircraft overflying the
 MGP VORTAC westbound or direct.
 NOTE: PODDE Transition: ATC assigned.
 NOTE: WICHITA FALLS Transition: For all aircraft landing within the
 Wichita Falls terminal area or overflying the SPS VORTAC.

SC-2, 02 DEC 2021 to 30 DEC 2021

KINGDOM ONE DEPARTURE