


WAAS CH <b>97324</b> <b>W17D</b>	APP CRS <b>176°</b>	Rwy Idg <b>13400</b> TDZE <b>562</b> Apt Elev <b>607</b>
--	------------------------	--

# RNAV (GPS) RWY 17C

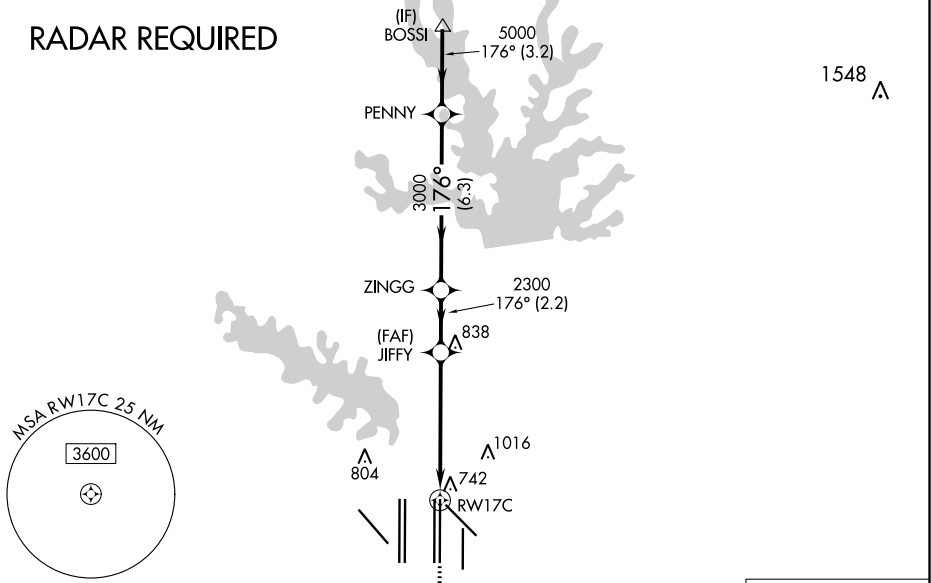
DALLAS-FORT WORTH INTL (DFW)

**▽** For uncompensated Baro-VNAV systems, LNAV/VNAV NA below -4°C (25°F) or above 54°C (130°F). Simultaneous approach authorized with Rwy 17L and 18L/R. DME/DME RNP-0.3 NA. LNAV procedure NA during simultaneous operations. Use of FD or AP providing RNAV track guidance required during simultaneous operations.

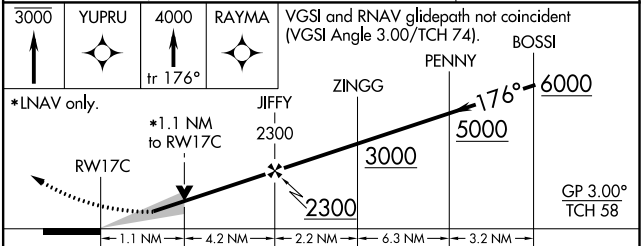
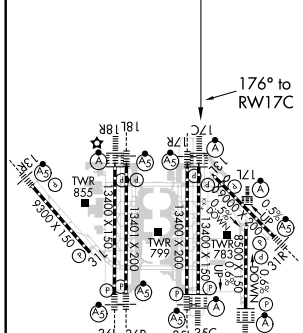
ALSF-2  MISSED APPROACH: Climb to at or below 3000 direct YUPRU then climb to 4000 on track 176° to RAYMA and hold.

ATIS ARR <b>123.775</b> DEP <b>135.925</b>	REGIONAL APP CON <b>127.075</b>	DFW TOWER <b>126.55 127.5 EAST</b> <b>124.15 134.9 WEST</b>	GND CON <b>121.65 121.8 EAST</b> <b>121.85 WEST</b>	CLNC DEL <b>128.25</b>	CPDLC
--	------------------------------------	---	---	---------------------------	-------

## RADAR REQUIRED



ELEV <b>607</b>	<b>D</b>	TDZE <b>562</b>
-----------------	----------	-----------------



CATEGORY	A	B	C	D
LPV DA		762/18	200 (200-½)	
LNAV/VNAV DA		1068/60	506 (500-¼)	
LNAV MDA	1000/24	438 (400-½)	1000/40	438 (400-¾)

HIRL all Rwys  
REIL Rwy 13L and 31L  
TDZ/CL all Rwy except 13L and 31L

SC-2, 02 DEC 2021 to 30 DEC 2021

SC-2, 02 DEC 2021 to 30 DEC 2021