

WAAS CH <b>86807</b> <b>W18A</b>	APP CRS <b>176°</b>	Rwy Idg <b>13401</b> TDZE <b>602</b> Apt Elev <b>606</b>
--	------------------------	--

# RNAV (GPS) RWY 18L

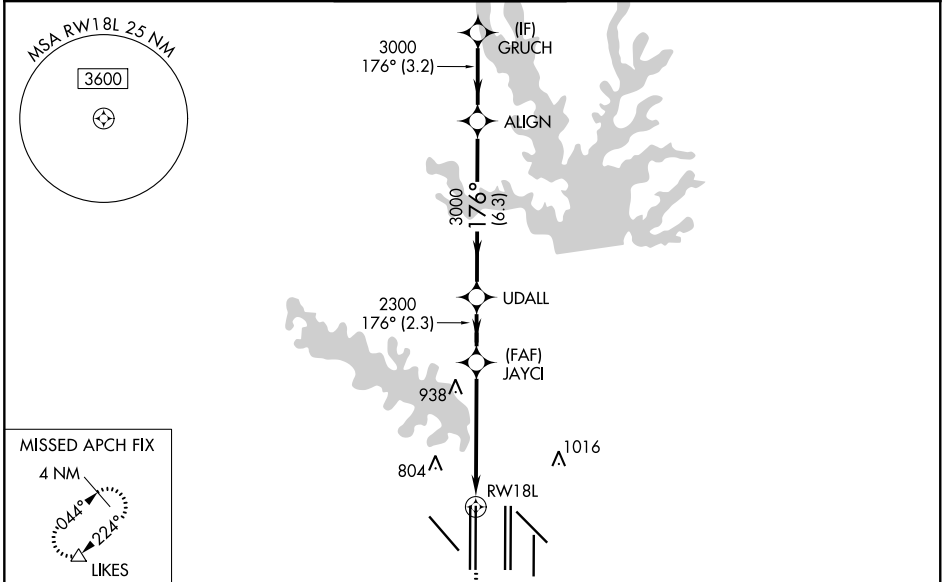
DALLAS-FORT WORTH INTL (DFW)

RADAR required for procedure entry. RNP APCH.

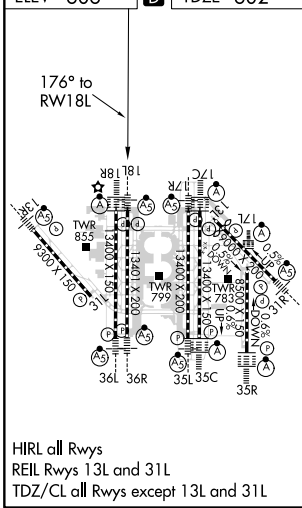
⚠ Simultaneous approach authorized with Rwy 17L/C/R. For uncompensated Baro-VNAV systems, LNAV/VNAV NA below -4°C or above 54°C. LNAV procedure NA during simultaneous operations. Use of FD or AP providing RNAV track guidance required during simultaneous operations. For inop ALS, increase LNAV/VNAV all Cats visibility to RVR 6000 and LNAV Cats C and D visibility to 1¼ SM.

MALSRL 	MISSED APPROACH: Climb to 1100, then climbing right turn to 3000 direct LIKES and hold.
------------	---

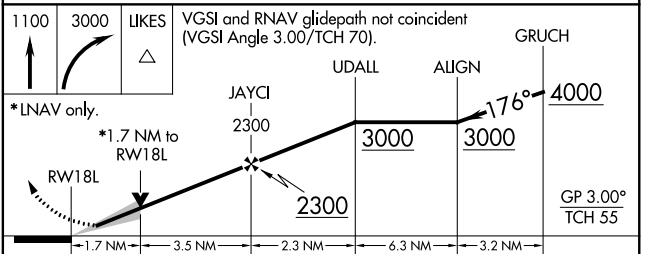
D-ATIS ARR <b>123.775</b> DEP <b>135.925</b>	REGIONAL APP CON <b>118.425</b>	DFW TOWER <b>126.55 127.5 EAST</b> <b>124.15 134.9 WEST</b>	GND CON <b>121.65 121.8 EAST</b> <b>121.85 WEST</b>	CLNC DEL <b>128.25</b>	CPDLC
--	------------------------------------	---	---	---------------------------	-------



ELEV <b>606</b>	<b>D</b>	TDZE <b>602</b>
-----------------	----------	-----------------



HIRL all Rwys  
REIL Rwy 13L and 31L  
TDZ/CL all Rwy except 13L and 31L



1100	3000	LIKES	GRUCH
*LNAV only.			
*1.7 NM to RWY18			
VGSI and RNAV glidepath not coincident (VGSI Angle 3.00°/TCH 70).			
RWY18			
JAYCI			
UDALL			
ALIGN			
GRUCH			
GP 3.00° TCH 55			
CATEGORY			
A			
B			
C			
D			
LPV	DA	802/18 200 (200-½)	
LNAV/VNAV	DA	1013/40 411 (500-¾)	
LNAV	MDA	1220/24 618 (700-½)	1220-13/8 618 (700-13/8)

SC-2, 02 DEC 2021 to 30 DEC 2021

SC-2, 02 DEC 2021 to 30 DEC 2021