

WAAS CH <b>93805</b> <b>W36B</b>	APP CRS <b>356°</b>	Rwy Idg <b>13400</b> TDZE <b>588</b> Apt Elev <b>607</b>
--	------------------------	--

# RNAV (GPS) RWY 36L

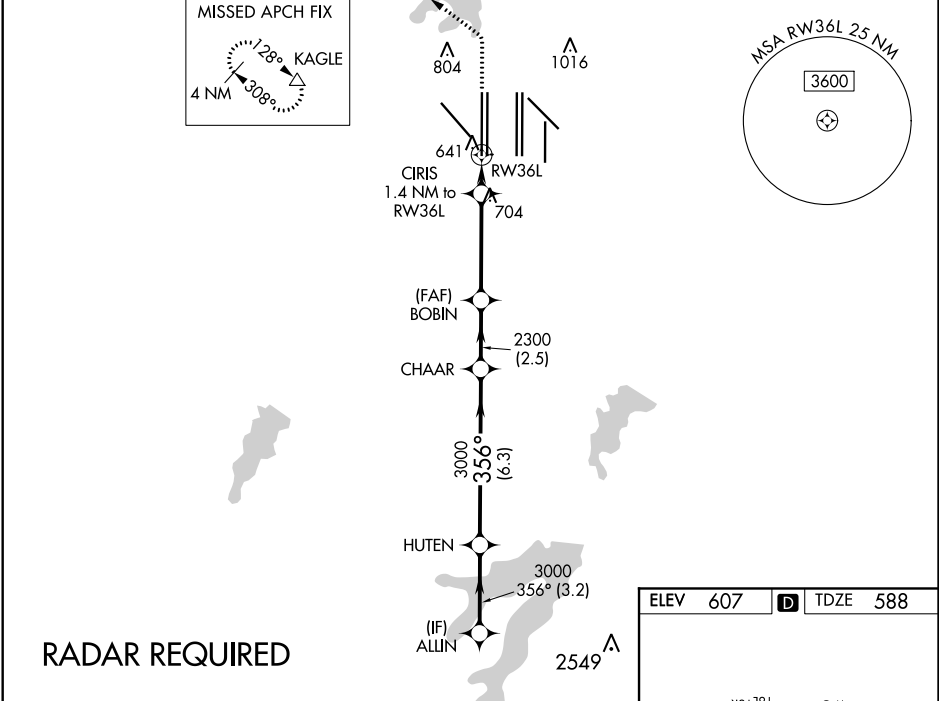
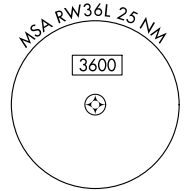
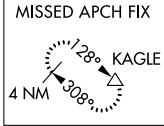
DALLAS-FORT WORTH INTL (DFW)

▼ For uncompensated Baro-VNAV systems, LNAV/VNAV NA below -4°C (25°F) or above 54°C (130°F). For inop MALSR, increase LNAV Cat C/D visibility to RVR 5500. Simultaneous approach authorized with Rwy 35L/C/R. DME/DME RNP-0.3 NA. LNAV procedure NA during simultaneous operations. Use of FD or AP providing RNAV track guidance required during simultaneous operations.

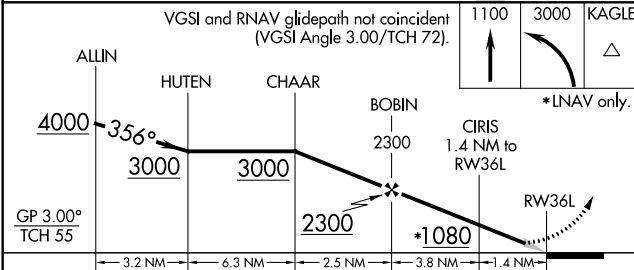


MISSED APPROACH: Climb to 1100 then climbing left turn to 3000 direct KAGLE and hold.

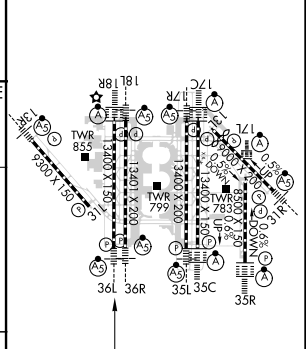
D-ATIS ARR <b>123.775</b> DEP <b>135.925</b>	REGIONAL APP CON <b>118.425</b>	DFW TOWER <b>126.55 127.5 EAST</b> <b>124.15 134.9 WEST</b>	GND CON <b>121.65 121.8 EAST</b> <b>121.85 WEST</b>	CLNC DEL <b>128.25</b>	CPDLC
--	------------------------------------	---	---	---------------------------	-------



**RADAR REQUIRED**



ELEV 607	<b>D</b> TDZE 588
----------	-------------------



CATEGORY	A	B	C	D
LPV DA		788/18	200 (200-1/2)	
LNAV/VNAV DA		987/45	399 (400-2/3)	
LNAV MDA	960/24	372 (400-1/2)	960/35	372 (400-2/3)

HIRL all Rwy's  
REIL Rwy's 13L and 31L  
TDZ/CL all Rwy's except 13L and 31L

SC-2, 02 DEC 2021 to 30 DEC 2021

SC-2, 02 DEC 2021 to 30 DEC 2021