


RNAV (RNP) Z RWY 13R

DALLAS-FORT WORTH INTL (DFW)

APP CRS 135°	Rwy Idg 9300
	TDZE 591
	Apt Elev 606

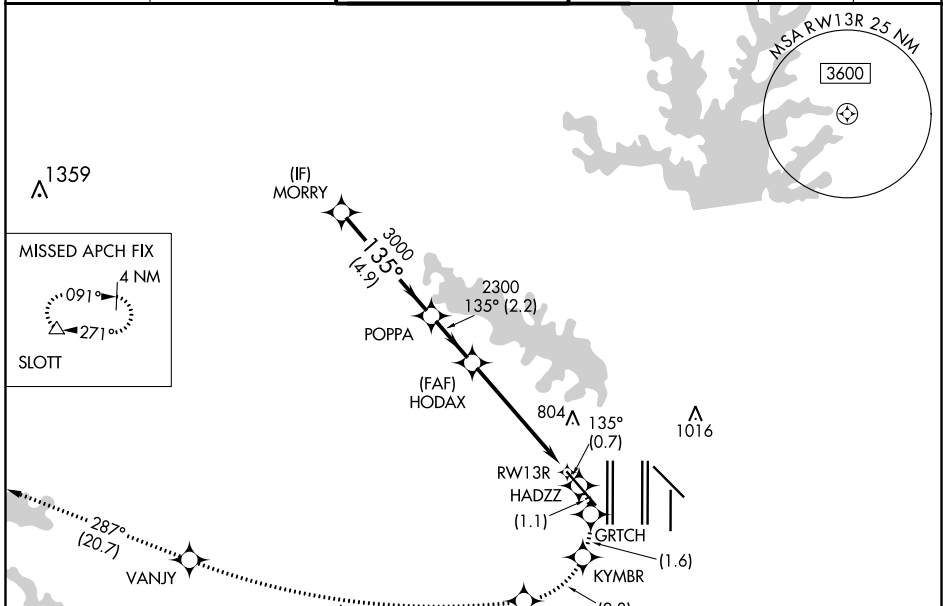
RNP AR APCH. RF required.

▽ For uncompensated Baro-VNAV systems, procedure NA below -6°C or above 54°C. Missed approach requires RNP less than 1.0.

MALSR 

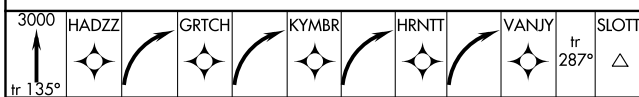
MISSED APPROACH: (Do not exceed 185K until HRNTT) Climb to 3000 on the RNAV missed approach route to SLOTT and hold.

D-ATIS ARR 123.775 DEP 135.925	REGIONAL APP CON 133.15 118.1	DFW TOWER 126.55 127.5 EAST 124.15 134.9 WEST	GND CON 121.65 121.8 EAST 121.85 WEST	CLNC DEL 128.25	CPDLC
--	---	---	---	---------------------------	-------



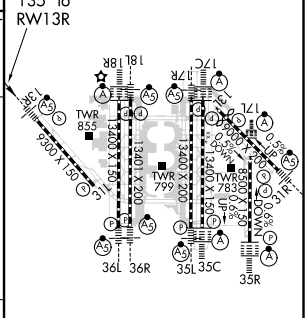
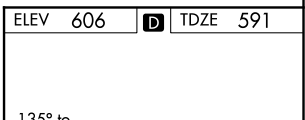
ELEV 606	TDZE 591
----------	----------

3000	HADZZ	GRTCH	KYMBR	HRNTT	VANJY	SLOTT
↑ 135°						



MORRY	POPPA	VGSi and RNAV glidepath not coincident (VGSi Angle 3.00/TCH 71).		HRNTT	VANJY	SLOTT
4.9 NM	2.2 NM			5.2 NM		

CATEGORY	A	B	C	D
RNP 0.30 DA	1041/45		450 (500-7%)	



HIRL all Rwys
 REIL Rwy 13L and 31L
 TDZ/CL all Rwys except 13L and 31L

AUTHORIZATION REQUIRED

SC-2, 02 DEC 2021 to 30 DEC 2021

SC-2, 02 DEC 2021 to 30 DEC 2021