

APP CRS 315°	Rwy Idg 9300
	TDZE 581
	Apt Elev 607

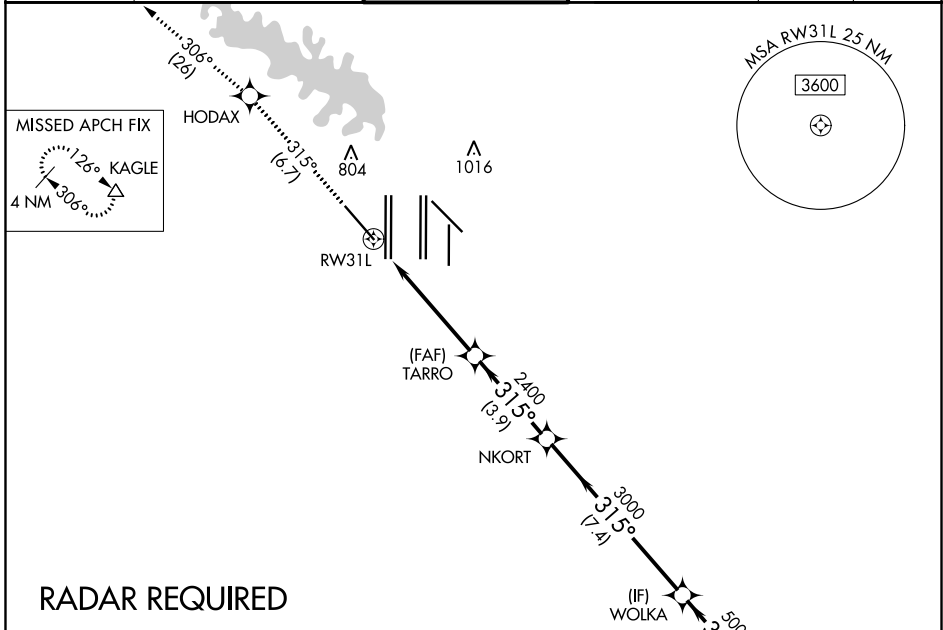
RNAV (RNP) Z RWY 31L

DALLAS-FORT WORTH INTL (DFW)

▼ For uncompensated Baro-VNAV systems, procedure NA below -4°C (25°F) or above 54°C (130°F). Simultaneous approach authorized with Rwy 31R. GPS Required. Use of FD or AP providing RNAV track guidance required during simultaneous operations.

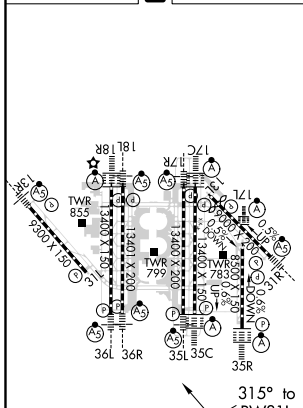
MISSED APPROACH: Climb to 3000 on track 315° to HODAX and on track 306° to KAGLE and hold.

D-ATIS ARR 123.775 DEP 135.925	REGIONAL APP CON 118.425 127.075 119.4	DFW TOWER 126.55 127.5 EAST 124.15 134.9 WEST	GND CON 121.65 121.8 EAST 121.85 WEST	CLNC DEL 128.25	CPDLC
--	--	---	---	---------------------------	-------



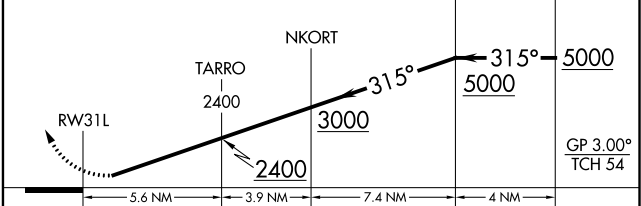
RADAR REQUIRED

ELEV 607	D	TDZE 581
-----------------	----------	-----------------



HIRL all Rwy
REIL Rwy 13L and 31L
TDZ/CL all Rwy except 13L and 31L

3000	HODAX	KAGLE	VGSI and RNAV glidepath not coincident (VGSI Angle 3.13/TCH 72).
fr 315°	✧	tr 306°	△



CATEGORY	A	B	C	D
RNP 0.30 DA	951/60 370 (400-1¼)			

AUTHORIZATION REQUIRED

SC-2, 02 DEC 2021 to 30 DEC 2021

SC-2, 02 DEC 2021 to 30 DEC 2021