

WAAS CH 99703 W31A	APP CRS 315°	Rwy Idg 9300 TDZE 581 Apt Elev 607
--	------------------------	---

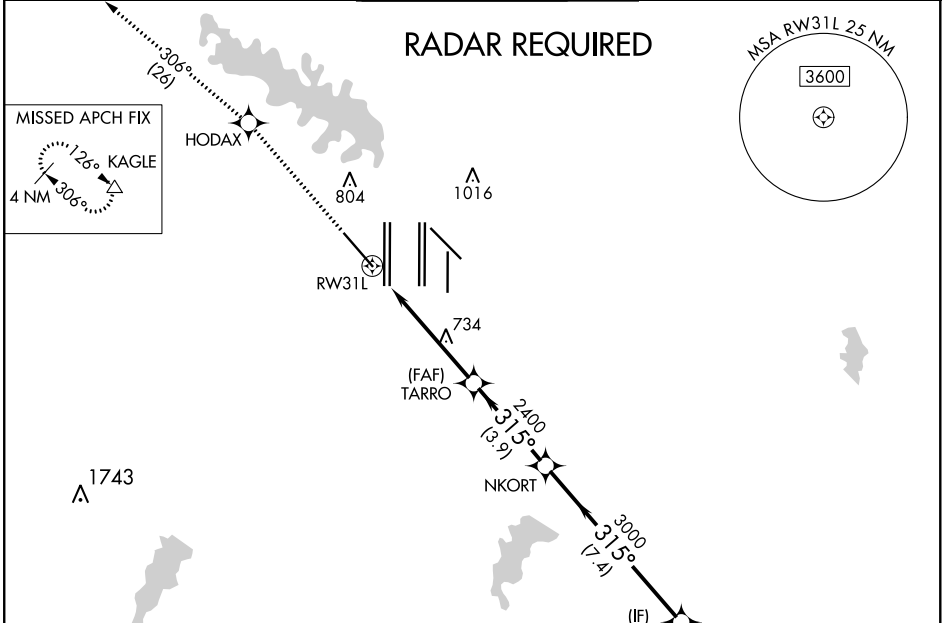
RNAV (GPS) Y RWY 31L

DALLAS-FORT WORTH INTL (DFW)

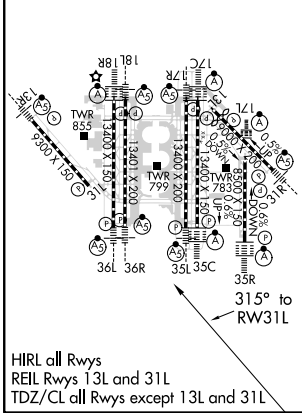
⚠ For uncompensated Baro-VNAV systems, LNAV/VNAV NA below -4°C (25°F) or above 54°C (130°F). Simultaneous approach authorized with Rwy 31R. DME/DME RNP-0.3 NA. LNAV procedure NA during simultaneous operations. Use of FD or AP providing RNAV track guidance required during simultaneous operations.

MISSED APPROACH: Climb to 3000 direct HODAX and on track 306° to KAGLE and hold.

D-ATIS ARR 123.775 DEP 135.925	REGIONAL APP CON 118.425 127.075 119.4	DFW TOWER 126.55 127.5 EAST 124.15 134.9 WEST	GND CON 121.65 121.8 EAST 121.85 WEST	CLNC DEL 128.25	CPDLC
--	--	---	---	---------------------------	-------



ELEV 607	D	TDZE 581
-----------------	----------	-----------------



3000	HODAX	tr 306°	KAGLE	VGSi and RNAV glidepath not coincident (VGSi Angle 3.13/TCH 72).	
*LNAV only.		NKORT		WOLKA	ZUREK
*1.2 NM to RWY 31L		TARRO	2400	315°	5000
RWY 31L	3000	315°	5000	GP 3.00° TCH 54	
1.2	4.4 NM	3.9 NM	7.4 NM	4 NM	
CATEGORY	A	B	C	D	
LPV DA	831/40		250 (300-¾)		
LNAV/VNAV DA	907/50		326 (400-1)		
LNAV MDA	1060/55	479 (500-1)	1060-1¾	479 (500-1¾)	

SC-2, 02 DEC 2021 to 30 DEC 2021

SC-2, 02 DEC 2021 to 30 DEC 2021