

VKTRY TWO ARRIVAL (RNAV) Transition Routes

SC-2, 02 DEC 2021 to 30 DEC 2021

D-ATIS ARR
123.775
REGIONAL APP CON
119.875 284.65

BELFR TRANSITION (BELFR.VKTRY2):
(ATC assigned only.)

FAWNT TRANSITION (FAWNT.VKTRY2):
(ATC assigned only.)

HNKER TRANSITION (HNKER.VKTRY2):
(ATC assigned only.)

HOFF TRANSITION (HOFF.VKTRY2):
(ATC assigned only.)

IBAKE TRANSITION (IBAKE.VKTRY2):
(ATC assigned only.)

KLAWW TRANSITION (KLAWW.VKTRY2):
(ATC assigned only.)

MDANO TRANSITION (MDANO.VKTRY2):
(ATC assigned only.)

MDANO TRANSITION (MDANO.VKTRY2):
(ATC assigned only.)

MDANO TRANSITION (MDANO.VKTRY2):
(ATC assigned only.)

MDANO TRANSITION (MDANO.VKTRY2):
(ATC assigned only.)

MDANO TRANSITION (MDANO.VKTRY2):
(ATC assigned only.)

MDANO TRANSITION (MDANO.VKTRY2):
(ATC assigned only.)

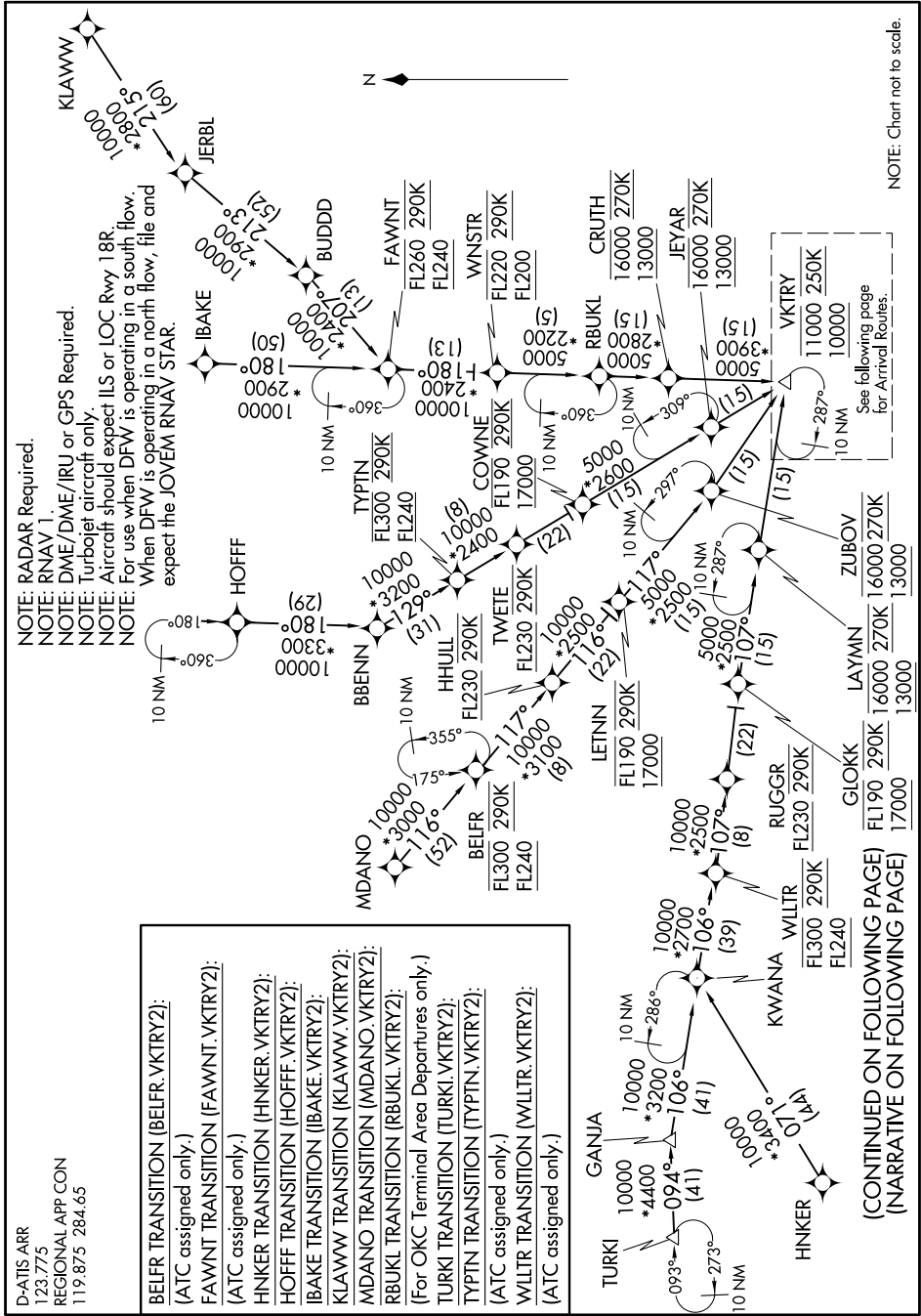
MDANO TRANSITION (MDANO.VKTRY2):
(ATC assigned only.)

MDANO TRANSITION (MDANO.VKTRY2):
(ATC assigned only.)

MDANO TRANSITION (MDANO.VKTRY2):
(ATC assigned only.)

MDANO TRANSITION (MDANO.VKTRY2):
(ATC assigned only.)

NOTE: RADAR Required.
NOTE: RNAV 1.
NOTE: DME/DME/IRU or GPS Required.
NOTE: Turbojet aircraft only.
NOTE: Aircraft should expect ILS or LOC Rwy 18R.
NOTE: For use when DFW is operating in a south flow.
NOTE: When DFW is operating in a north flow, file and expect the JOVEV RNAV STAR.



NOTE: Chart not to scale.

(CONTINUED ON FOLLOWING PAGE)
(NARRATIVE ON FOLLOWING PAGE)

SC-2, 02 DEC 2021 to 30 DEC 2021