

WAAS CH <b>72907</b> <b>W26A</b>	APP CRS <b>261°</b>	Rwy Idg <b>5263</b> TDZE <b>910</b> Apt Elev <b>913</b>
----------------------------------------	------------------------	---------------------------------------------------------------

# RNAV (GPS) RWY 26

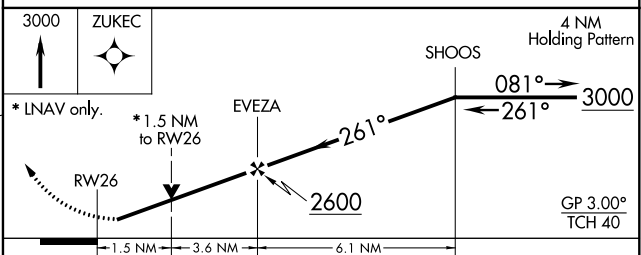
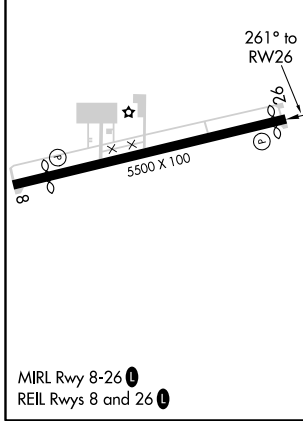
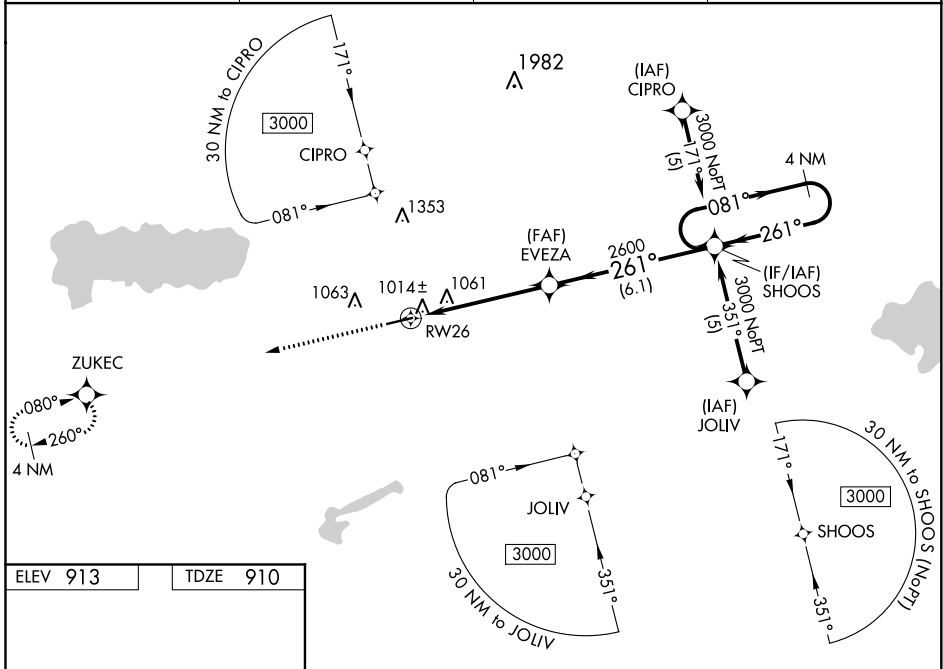
NEIL ARMSTRONG (AXV)

RNP APCH.

**NA** Baro-VNAV NA when using Lima altimeter setting. For uncompensated Baro-VNAV systems, LNAV/VNAV NA below -16°C (4°F) or above 54°C (130°F). Rwy 26 helicopter visibility reduction below 1 SM NA. When local altimeter setting not received, use Lima altimeter setting and increase LPV DA to 1291, LNAV/VNAV DA to 1324, and all MDA 60 feet, increase LNAV/VNAV visibility all Cats ¼ mile. VDP NA when using Lima altimeter setting.

MISSED APPROACH:  
Climb to 3000 direct ZUKEC and hold.

AWOS-3PT <b>128.325</b>	COLUMBUS APP CON <b>118.425 294.5</b>	UNICOM <b>122.8 (CTAF)</b>	<b>122.7</b>
----------------------------	------------------------------------------	-------------------------------	--------------



CATEGORY	A	B	C	D
LPV DA	1241-1¼	331 (400-1½)		NA
LNAV/VNAV DA	1274-1¼	364 (400-1½)		NA
LNAV MDA	1440-1	530 (600-1)	1440-1½ 530 (600-1½)	NA

EC-2, 02 DEC 2021 to 30 DEC 2021

EC-2, 02 DEC 2021 to 30 DEC 2021