

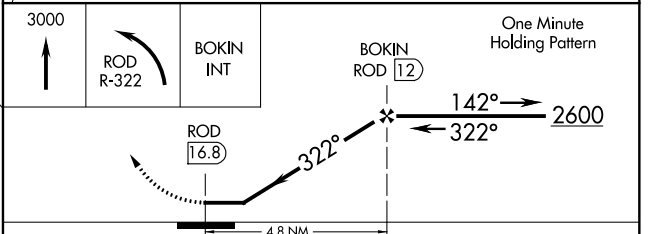
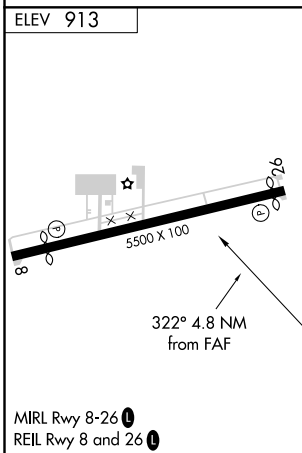
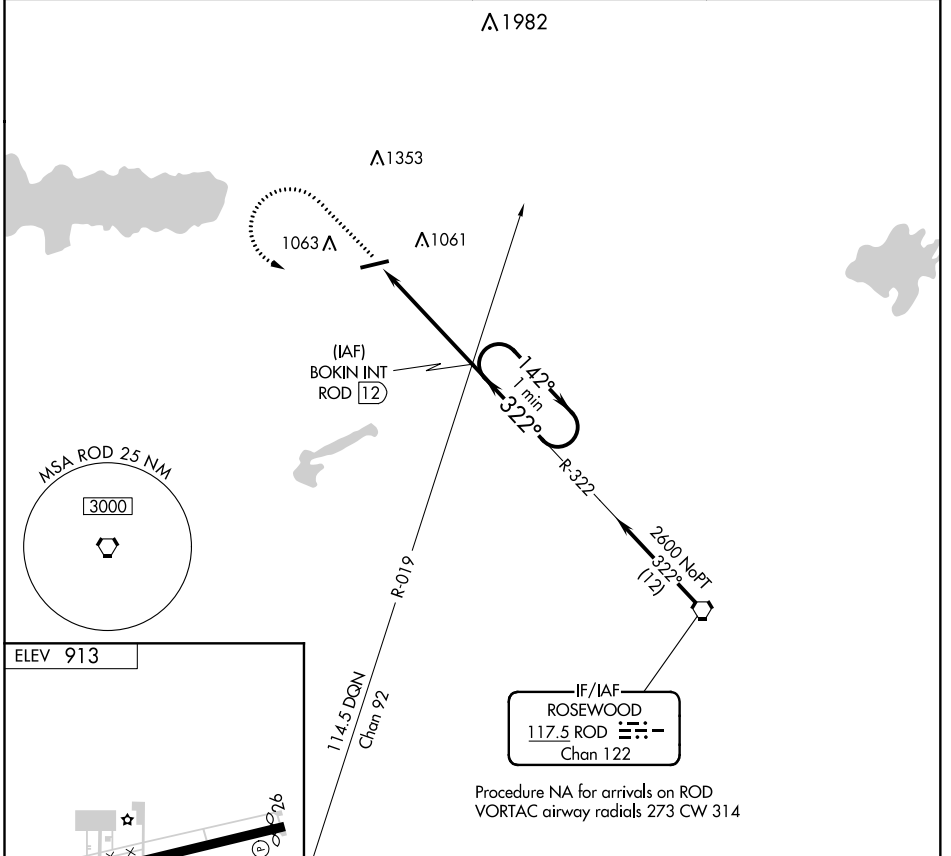
VORTAC ROD <b>117.5</b> Chan <b>122</b>	APP CRS <b>322°</b>	Rwy Idg TDZE Apt Elev	<b>N/A</b> <b>N/A</b> <b>913</b>
---	------------------------	-----------------------------	--

**VOR-A**  
NEIL ARMSTRONG (AXV)

**⚠** When local altimeter setting not received, use Lima altimeter setting and increase all MDA 60 feet. Night landing: Rwy 8 NA. Helicopter visibility reduction below 1 SM NA.

**MISSED APPROACH:** Climb to 3000 then left turn on ROD VORTAC R-322 to BOKIN INT/ ROD 12 DME and hold.

AWOS-3PT <b>128.325</b>	COLUMBUS APP CON <b>118,425 294.5</b>	UNICOM <b>122.8</b> (CTAF)	<b>122.7</b> <b>0</b>
----------------------------	--	-------------------------------	-----------------------



FAF to MAP 4.8 NM						
Knots	60	90	120	150	180	
Min:Sec	4:48	3:12	2:24	1:55	1:36	
CATEGORY	A		B		C	D
CIRCLING	1500-1		587 (600-1)		1500-1½ 587 (600-1½)	NA

EC-2, 02 DEC 2021 to 30 DEC 2021

EC-2, 02 DEC 2021 to 30 DEC 2021