

WAAS CH 63216 W15A	APP CRS 151°	Rwy Idg TDZE Apt Elev	5500 236 236
--	------------------------	-----------------------------	---

RNAV (GPS) RWY 15

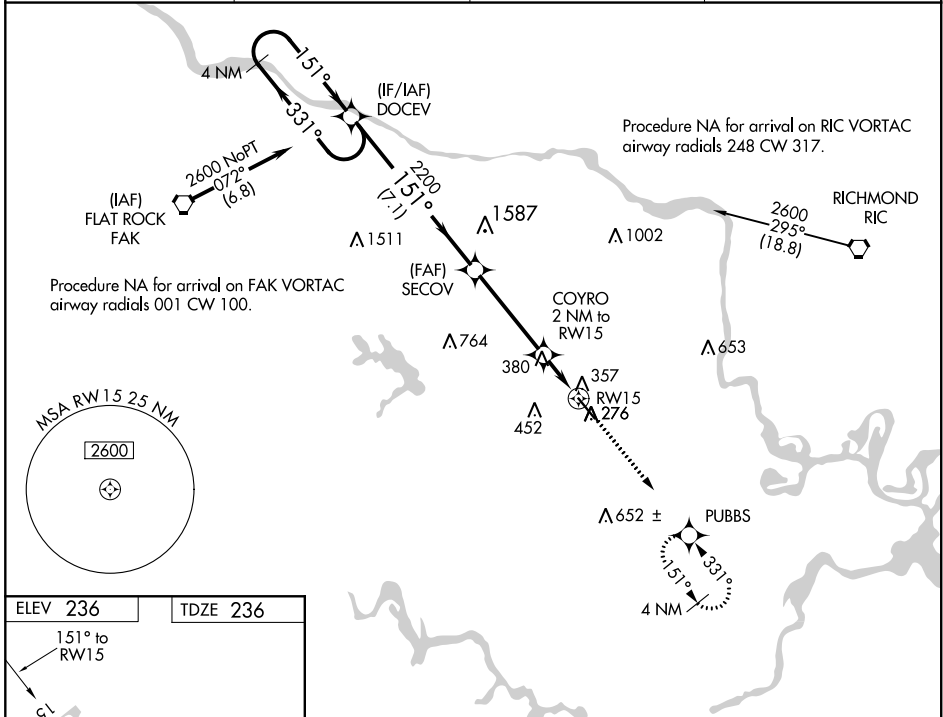
RICHMOND EXEC/CHESTERFIELD COUNTY (F'CI)

RNP APCH.

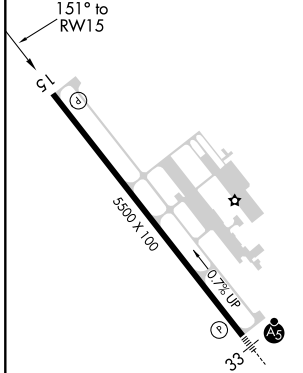
NA For uncompensated Baro-VNAV systems, LNAV/VNAV NA below -15°C or above 54°C. When local altimeter setting not received, use Richmond Intl altimeter setting and increase all DA 36 feet, and all MDA 40 feet, increase LNAV/VNAV all Cats visibility 1/4 mile. VDP and Baro-VNAV NA when using Richmond Intl altimeter setting.

MISSED APPROACH: Climb to 2000 direct PUBBS and hold.

AWOS-3PT 128.625	POTOMAC APP CON 126.75 307.2	CLNC DEL 124.6	UNICOM 123.05 (CTAF)
----------------------------	--	--------------------------	--------------------------------



ELEV 236	TDZE 236
----------	----------



4 NM Holding Pattern	DOCEV	SECOV	COYRO 2 NM to RWY 15	2000	PUBBS
2600	331°	151°	2200	*900	*LNAV only.
GP 3.00° TCH 43					
	7.1 NM	3.9 NM	0.7 NM	1.3 NM	

CATEGORY	A	B	C	D
LPV DA	486-1 250 (300-1)			
LNAV/VNAV DA	692-1½ 456 (500-1½)			
LNAV MDA	680-1 444 (500-1)	680-1⅜ 444 (500-1⅜)	680-1½ 444 (500-1½)	680-1½ 444 (500-1½)

REIL Rwy 15 **1**
HIRL Rwy 15-33 **1**

NE-3, 02 DEC 2021 to 30 DEC 2021

NE-3, 02 DEC 2021 to 30 DEC 2021