

| | | | |
|--|------------------------|-----------------------------|---|
| WAAS CH 40423 W12A | APP CRS 126° | Rwy Idg TDZE Apt Elev | 5704 2458 2458 |
|--|------------------------|-----------------------------|---|

RNAV (GPS) RWY 12

DAWSON COMMUNITY (GDV)

RNP APCH.

▼ For uncompensated Baro-VNAV systems, LNAV/VNAV NA below -19°C or above 28°C. When local climeter setting not received, procedure NA. Rwy 12 helicopter visibility reduction below 3/4 SM NA.

MISSED APPROACH: Climb to 6000 direct ZORAS and on track 060° to YAFLU and hold, continue climb-in-hold to 6000.

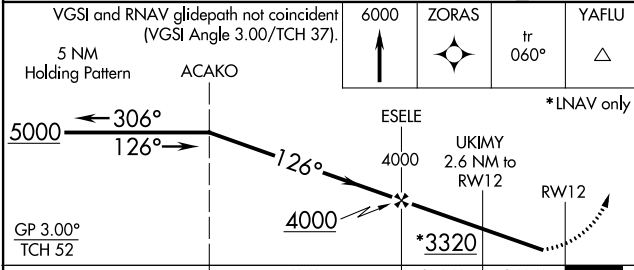
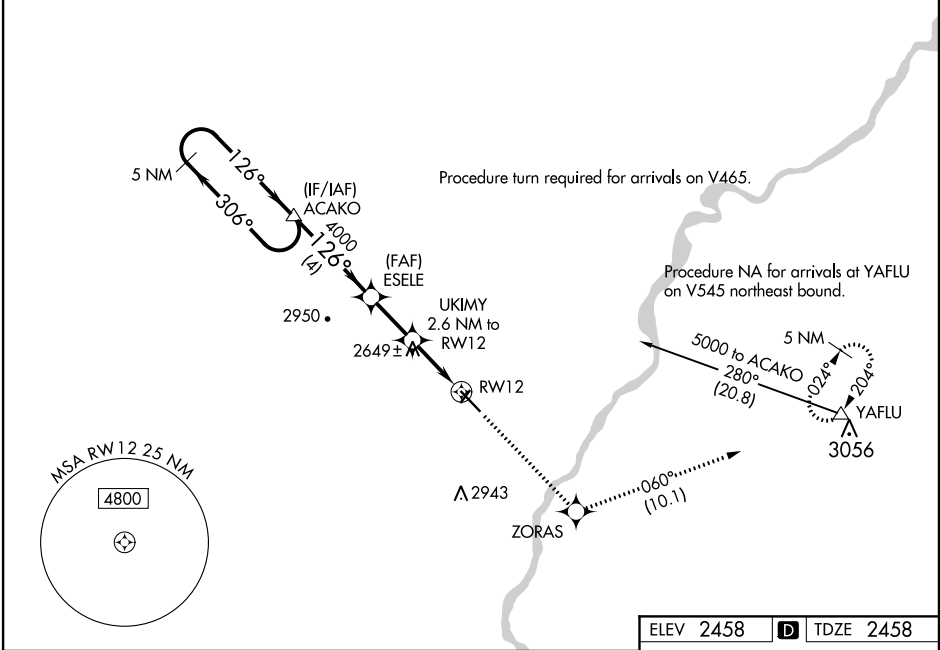
AWOS-3PT
135.075

SALT LAKE CENTER
126.85 305.2

UNICOM
122.8 (CTAF) 0

NW-1, 02 DEC 2021 to 30 DEC 2021

NW-1, 02 DEC 2021 to 30 DEC 2021



| | |
|-----------|--------------------|
| ELEV 2458 | D TDZE 2458 |
|-----------|--------------------|

| CATEGORY | A | B | C | D |
|--------------|-----------------------|-----------------------|-------------------------------|-------------------------------|
| LPV DA | | 2708-1 | 250 (300-1) | |
| LNAV/VNAV DA | | 2708-1 | 250 (300-1) | |
| LNAV MDA | 2900-1 | 442 (500-1) | 2900-1 3/8 | 442 (500-1 3/8) |
| CIRCLING | 2900-1 442 (500-1) | 2920-1 462 (500-1) | 3280-2 1/2 822 (900-2 1/2) | 3280-2 3/4 822 (900-2 3/4) |

