

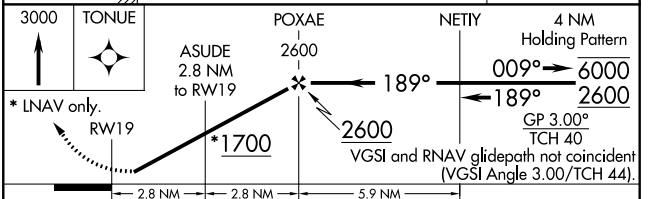
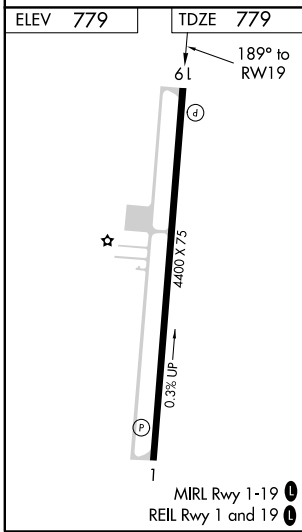
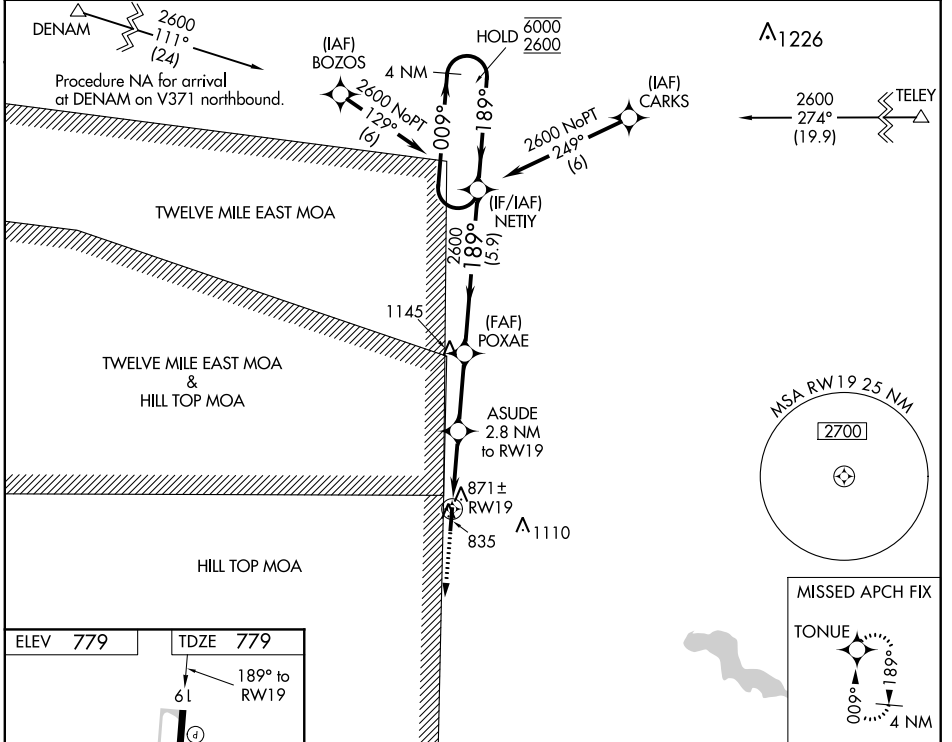
WAAS CH 50438 W19A	APP CRS 189°	Rwy Idg TDZE Apt Elev	4400 779 779
--	------------------------	-----------------------------	---

RNAV (GPS) RWY 19

PERU MUNI (I76)

RNP APCH.	<p>▼ Rwy 19 Helicopter visibility reduction below 3/4 SM NA. Baro-VNAV NA. Use Grissom ARB altimeter setting; when not received use Logansport altimeter setting and increase all DAs 8 feet.</p> <p>▲ NA</p>	<p>MISSED APPROACH: Climb to 3000 direct TONUE and hold.</p>
-----------	---	--

GUS ASOS 108.45 270.8	GRISSOM APP CON ★ 121.05 338.275	UNICOM 122.8 (CTAF) 0
---------------------------------	--	---------------------------------



CATEGORY	A	B	C	D
LPV DA		1053-1	274 (300-1)	
RNAV/VNAV DA		1074-1	295 (300-1)	
RNAV MDA	1160-1	381 (400-1)	1160-1 1/8	381 (400-1 1/8)
CIRCLING	1280-1	501 (600-1)	1500-2 721 (800-2)	1500-2 1/4 721 (800-2 1/4)

EC-2, 02 DEC 2021 to 30 DEC 2021

EC-2, 02 DEC 2021 to 30 DEC 2021