

VORTAC OKK 113.5 Chan 82	APP CRS 350°	Rwy Idg TDZE 777 Apt Elev 779
---------------------------------------	------------------------	---

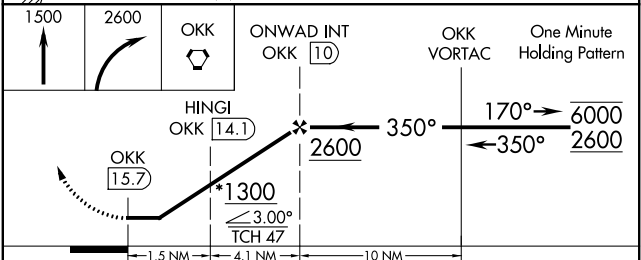
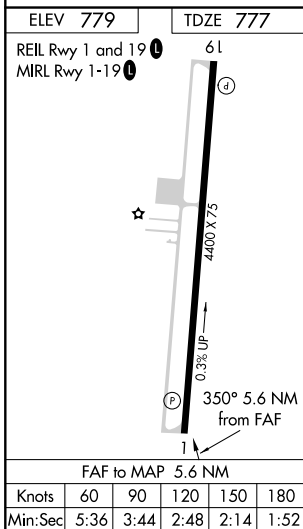
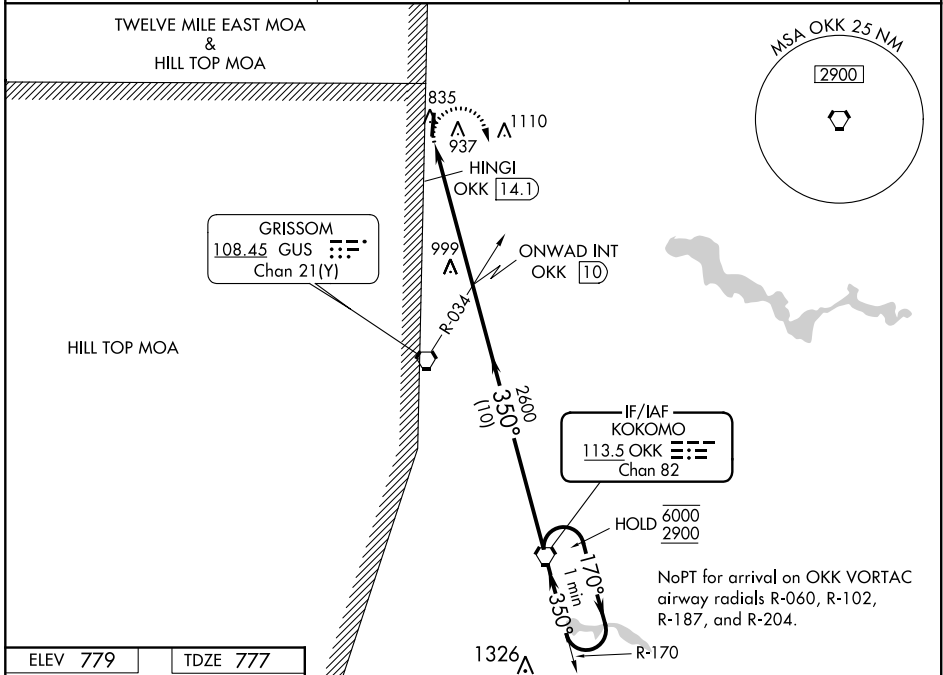
VOR RWY 1

PERU MUNI (I76)

▽ Rwy 1 helicopter visibility reduction below 1 SM NA. Use Grissom ARB altimeter setting; when not received, use Logansport altimeter setting.

△ NA MISSED APPROACH: Climb to 1500 then climbing right turn to 2600 direct OKK VORTAC and hold.

GUS ASOS 108.45 270.8	GRISSOM APP CON * 121.05 338.275	UNICOM 122.8 (CTAF) 📻
---------------------------------	--	--



CATEGORY	A	B	C	D
S-1	1300-1	523 (600-1)	1300-1½ 523 (600-1½)	1300-1¾ 523 (600-1¾)
C CIRCLING	1300-1	521 (600-1)	1500-2 721 (800-2)	1500-2¼ 721 (800-2¼)
HINGI DME FIX MINIMUMS				
S-1	1240-1	463 (500-1)	1240-1⅜ 463 (500-1⅜)	1240-1½ 463 (500-1½)
C CIRCLING	1280-1	501 (600-1)	1500-2 721 (800-2)	1500-2¼ 721 (800-2¼)