

WAAS CH <b>65734</b> <b>W27A</b>	APP CRS <b>272°</b>	Rwy Idg TDZE Apt Elev	<b>5000</b> <b>861</b> <b>861</b>
--	------------------------	-----------------------------	---

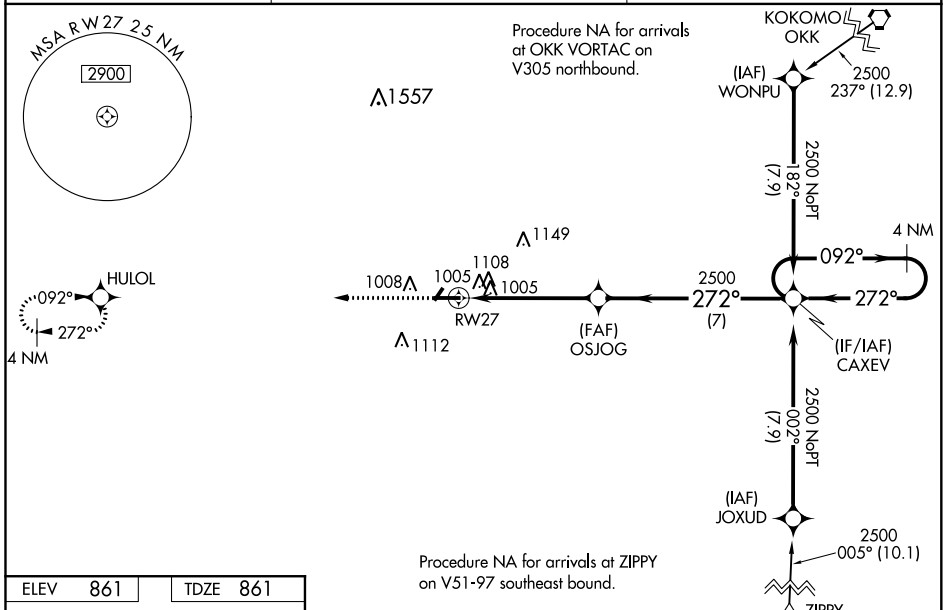
# RNAV (GPS) RWY 27

FRANKFORT MUNI (F'KR)

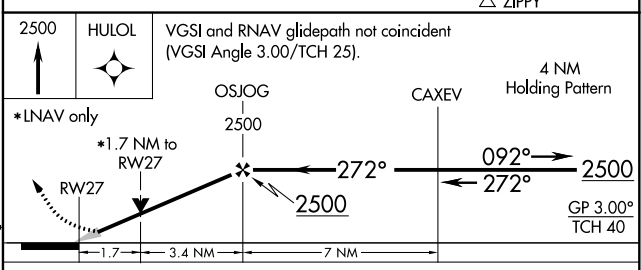
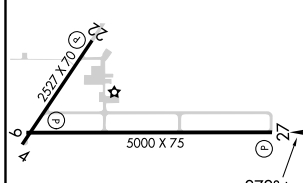
**NA** Baro-VNAV NA when using Indianapolis Exec altimeter setting. For uncompensated Baro-VNAV systems, LNAV/VNAV NA below -1.6°C (4°F) or above 54°C (130°F). DME/DME RNP-0.3 NA. VDP NA with Indianapolis Exec altimeter setting. When local altimeter setting not received, use Indianapolis Exec altimeter setting and increase all DA 56 feet and all MDA 60 feet; increase LPV all Cats visibility 1/8 mile, LNAV Cats C/D visibility 1/8 mile, and Circling Cats C/D visibility 1/4 mile.

**MISSED APPROACH:** Climb to 2500 direct HULOL and hold.

AWOS-3 <b>124.325</b>	GRISSOM APP CON * <b>123.85 291.675</b>	UNICOM <b>123.0 (CTAF) 0</b>
--------------------------	--	---------------------------------



ELEV	<b>861</b>	TDZE	<b>861</b>
------	------------	------	------------



CATEGORY	A	B	C	D
LPV DA	1111-7/8 250 (300-7/8)			
LNAV/VNAV DA	1476-2 1/2 615 (700-2 1/2)			
LNAV MDA	1420-1	559 (600-1)	1420-1 1/8	559 (600-1 1/8)
<b>C</b> CIRCLING	1460-1	599 (600-1)	1520-1 3/4	1520-2
			659 (700-1 1/4)	659 (700-2)

MIRL Rwy 9-27 and 4-22 0

REIL Rwy 9 and 27 0

EC-2, 02 DEC 2021 to 30 DEC 2021

EC-2, 02 DEC 2021 to 30 DEC 2021