

WAAS CH 58332 W19A	APP CRS 186°	Rwy Idg TDZE 522 Apt Elev 522	5002
--	------------------------	---	-------------

RNAV (GPS) RWY 19

MAYFIELD GRAVES COUNTY (M25)

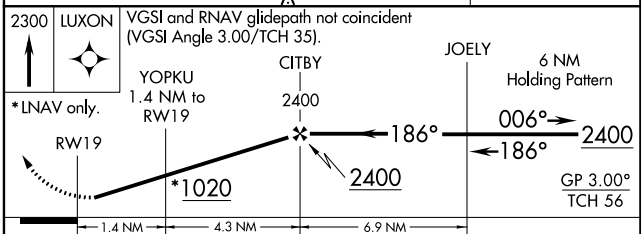
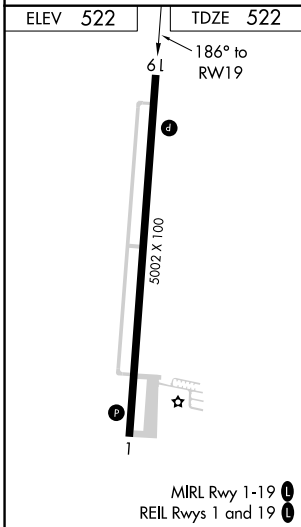
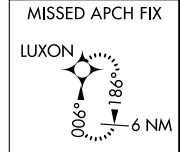
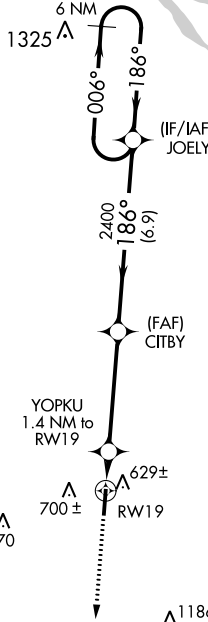
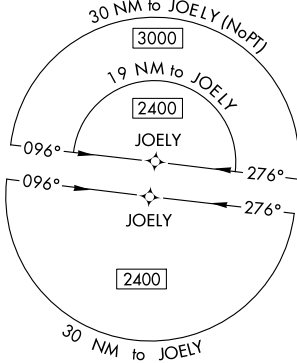
⚠ For uncompensated Baro-VNAV systems, LNAV/VNAV NA below -16°C (4°F) or above 54°C (130°F). DME/DME RNP-0.3 NA. When local altimeter setting not received, use Paducah altimeter setting and increase all DA 61 feet and all MDA 80 feet; increase LNAV/VNAV all Cats visibility 1/8 mile and LNAV Cat C and D and Circling Cat C and D visibility 1/4 mile. Baro-VNAV NA when using Paducah altimeter setting. Rwy 1, 19 helicopter visibility reduction below 1 SM NA. Procedure NA at night.

MISSED APPROACH:
Climb to 2300 direct LUXON and hold.

AWOS-3
120.625

MEMPHIS CENTER
133.65 292.15

UNICOM
122.8 (CTAF) 0



CATEGORY	A	B	C	D
LPV DA	772-1 250 (300-1)			
LNAV/VNAV DA	810-1 288 (300-1)			
LNAV MDA	880-1 358 (400-1)			
CIRCLING	1060-1 538 (600-1)	1060-1½ 538 (600-1½)	1280-2½ 758 (800-2½)	

SE-1, 02 DEC 2021 to 30 DEC 2021

SE-1, 02 DEC 2021 to 30 DEC 2021