

WAAS CH 78432 W01B	APP CRS 006°	Rwy Idg TDZE 522 Apt Elev 522	5002
--	------------------------	---	-------------

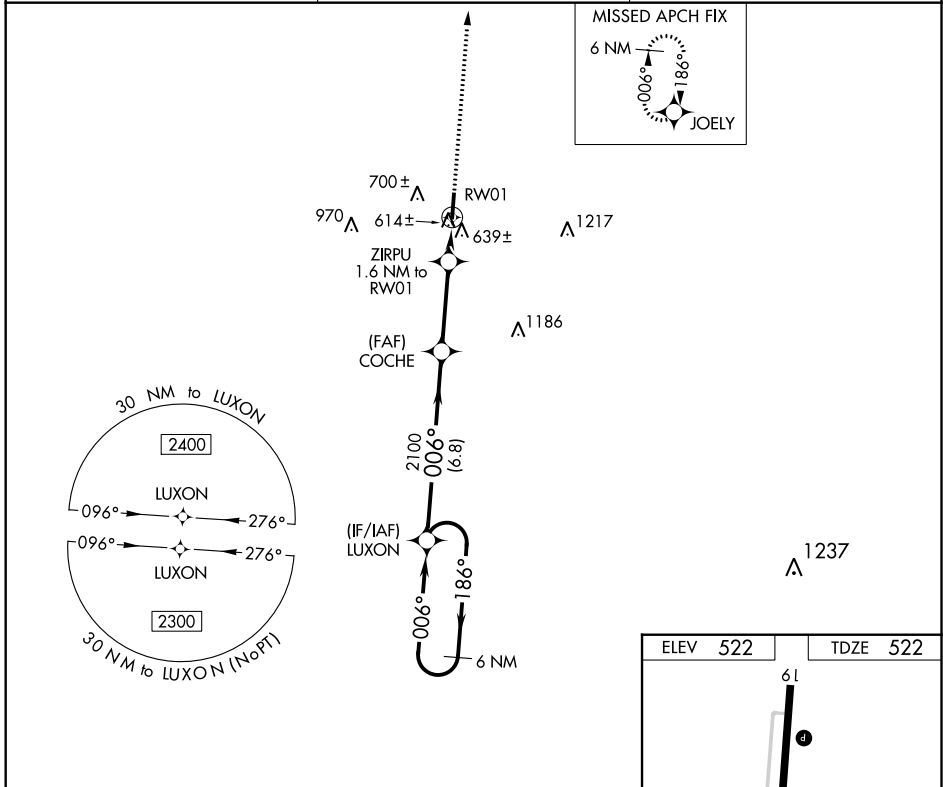
RNAV (GPS) Y RWY 1

MAYFIELD GRAVES COUNTY (M25)

NA DME/DME RNP-0.3 NA. When local altimeter setting not received, use Paducah altimeter setting and increase all MDA 80 feet and increase LP Cat C and D visibility $\frac{3}{8}$ mile and LNAV Cat C and D visibility and Circling Cat C and D visibility $\frac{1}{4}$ mile. Rwy 1, 19 helicopter visibility reduction below 1 SM NA. Procedure NA at night.

MISSED APPROACH: Climb to 2400 direct JOELY and hold.

AWOS-3 120.625	MEMPHIS CENTER 133.65 292.15	UNICOM 122.8 (CTAF) 1
--------------------------	--	---------------------------------



SE-1, 02 DEC 2021 to 30 DEC 2021

SE-1, 02 DEC 2021 to 30 DEC 2021

