

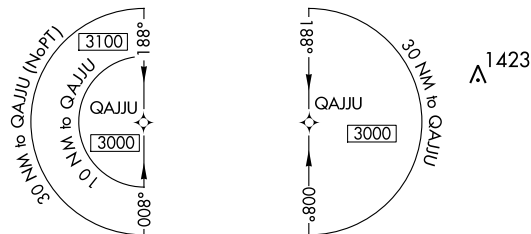
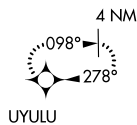
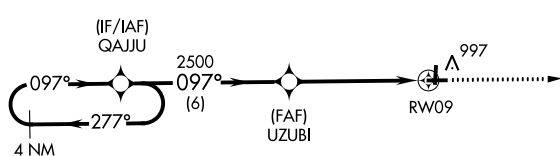
APP CRS	Rwy Idg	<b>3795</b>
<b>097°</b>	TDZE	<b>880</b>
	Apt Elev	<b>895</b>

# RNAV (GPS) RWY 9

MARLETTE TOWNSHIP (77G)

RNP APCH.	MISSED APPROACH: Climb to 2700 direct UYULU and hold.
<p>▼ Rwy 9 helicopter visibility reduction below 1 SM NA. Procedure NA at night.</p> <p>▲ NA Use Caro altimeter setting; when not received, use Bad Axe altimeter setting and increase all MDA 20 feet and visibility Cats C and D ¼ SM.</p>	

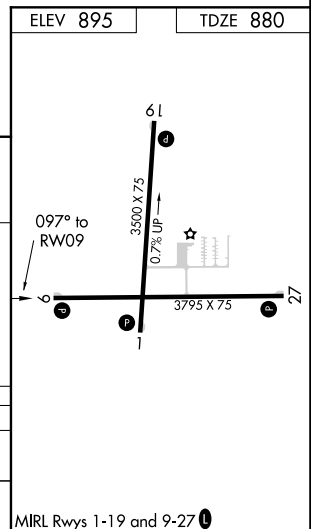
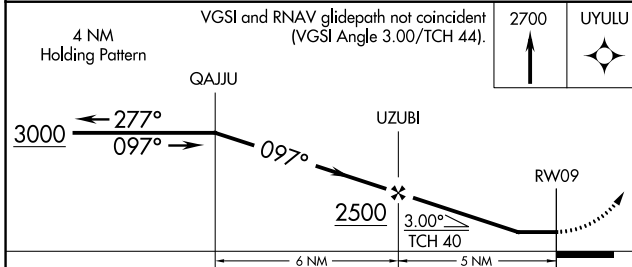
CFS AWOS-3 <b>119.275</b>	CLEVELAND CENTER <b>127.7 290.425</b>	UNICOM <b>122.8 (CTAF) 0</b>
------------------------------	--	---------------------------------



EC-1, 02 DEC 2021 to 30 DEC 2021

EC-1, 02 DEC 2021 to 30 DEC 2021

ELEV 895	TDZE 880
----------	----------



CATEGORY	A	B	C	D
LNVA MDA	1420-1	540 (600-1)	1420-1½	540 (600-1½)
CIRCLING	1460-1	565 (600-1)	1460-1½	1560-2
			565 (600-1½)	665 (700-2)

MRL Rwy 1-19 and 9-27 0