

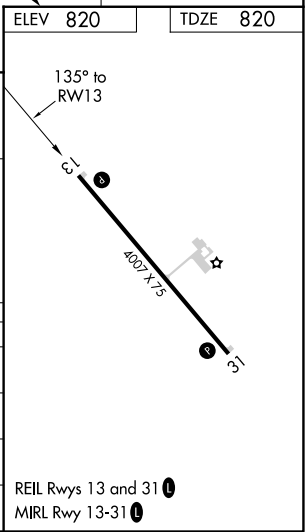
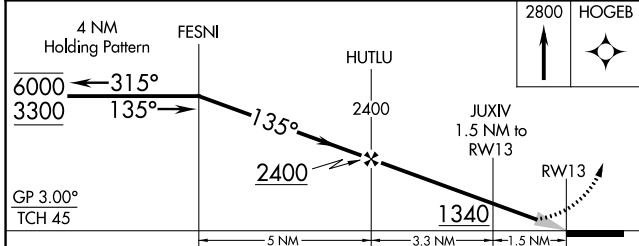
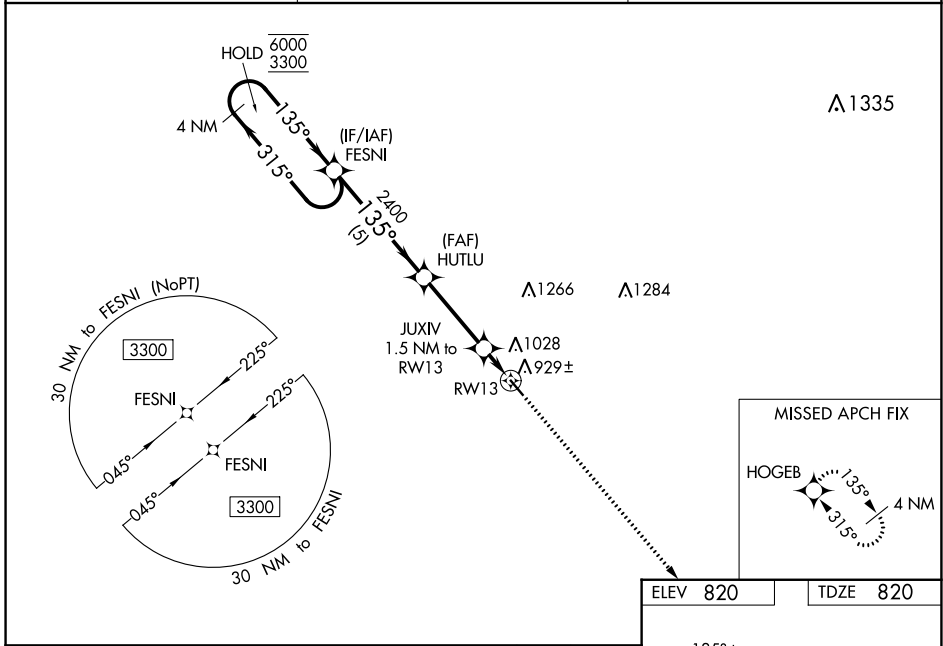
WAAS CH <b>40333</b> <b>W13A</b>	APP CRS <b>135°</b>	Rwy Idg TDZE <b>820</b> Apt Elev <b>820</b>	<b>4007</b>
----------------------------------------	------------------------	---------------------------------------------------	-------------

# RNAV (GPS) RWY 13

HALLOCK MUNI (HCO)

RNP APCH-GPS.	MISSED APPROACH: Climb to 2800 direct HOGEB and hold.
▽ Baro-VNAV NA when using Grafton altimeter setting. For uncompensated Baro-VNAV systems, LNAV/VNAV NA below -16°C or above 54°C. When local altimeter setting not received, use Grafton altimeter setting and increase LPV DA to 1082 feet; increase LNAV/VNAV DA to 1161 feet; increase all MDAs 80 feet and LNAV visibility Cat C ¼ SM, and Circling visibility Cat C ¼ SM.	

AWOS-3 <b>126.475</b>	MINNEAPOLIS CENTER <b>132.15 269.6</b>	UNICOM <b>122.8 (CTAF) 0</b>
--------------------------	-------------------------------------------	---------------------------------



CATEGORY	A	B	C	D
LPV DA	1020-1	200 (200-1)		NA
LNAV/VNAV DA	1099-1	279 (300-1)		NA
LNAV MDA	1180-1	360 (400-1)		NA
<b>C</b> CIRCLING	1380-1	560 (600-1)	1380-1½ 560 (600-1½)	NA

NC-1, 02 DEC 2021 to 30 DEC 2021

NC-1, 02 DEC 2021 to 30 DEC 2021

REIL Rwy 13 and 31 0  
MIRL Rwy 13-31 0