

WAAS CH <b>69403</b> <b>W15A</b>	APP CRS <b>148°</b>	Rwy Idg TDZE Apt Elev	<b>4000</b> <b>361</b> <b>367</b>
--	------------------------	-----------------------------	---

# RNAV (GPS) RWY 15

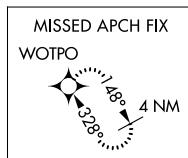
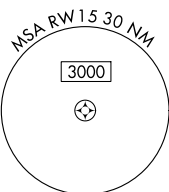
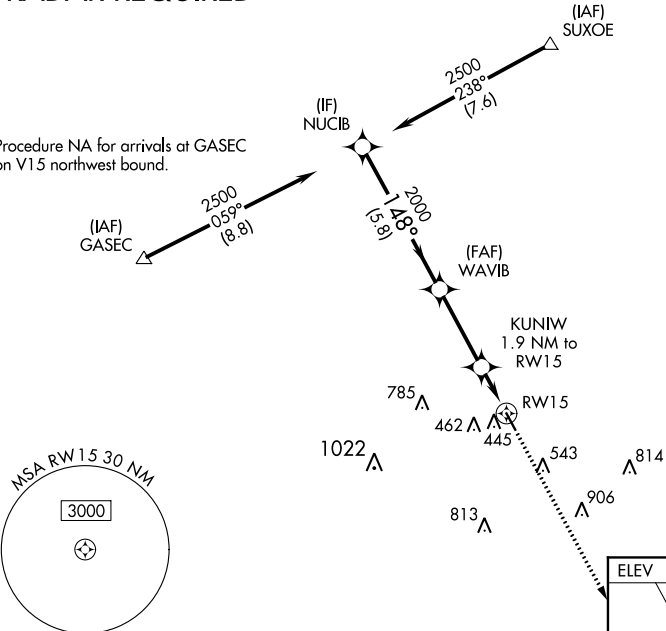
COULTER FIELD (CFD)

RNP APCH.		MISSED APPROACH: Climb to 2000 direct WOTPO and hold.	
Baro-VNAV NA. Rwy 15 helicopter visibility reduction below 3/4 SM NA. Use College Station altimeter setting; when not received, use Caldwell altimeter setting and increase all DA 31 feet and all MDA 40 feet.			
AWOS-3PT <b>125.975</b>	CLL ASOS <b>126.85</b>	HOUSTON APP CON <b>134.3 360.85</b>	UNICOM <b>123.0 (CTAF) 0</b>

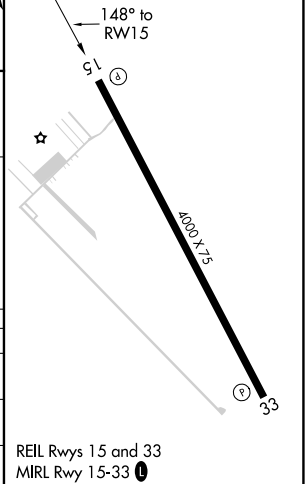
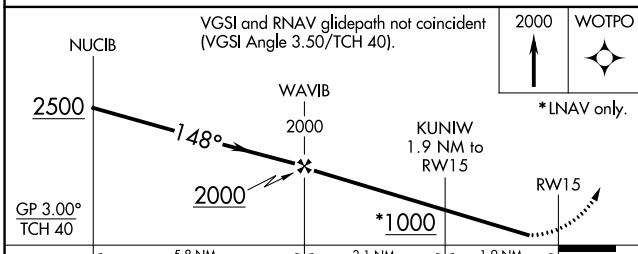
## RADAR REQUIRED

Procedure NA for arrivals at SUXOE on V369 northwest bound.

Procedure NA for arrivals at GASEC on V15 northwest bound.



ELEV <b>367</b>	TDZE <b>361</b>
-----------------	-----------------



CATEGORY	A	B	C	D
LPV DA	636-1	275 (300-1)		NA
LNNAV/VNAV DA	636-1	275 (300-1)		NA
LNNAV MDA	720-1	359 (400-1)		NA

REIL Rwy 15 and 33  
MIRL Rwy 15-33 0

SC-5, 02 DEC 2021 to 30 DEC 2021

SC-5, 02 DEC 2021 to 30 DEC 2021