

VORTAC FBC 108.2 Chan 19	APP CRS 298°	Rwy Idg TDZE Apt Elev	4477 763 763
--	------------------------	-----------------------------	---

VOR RWY 27

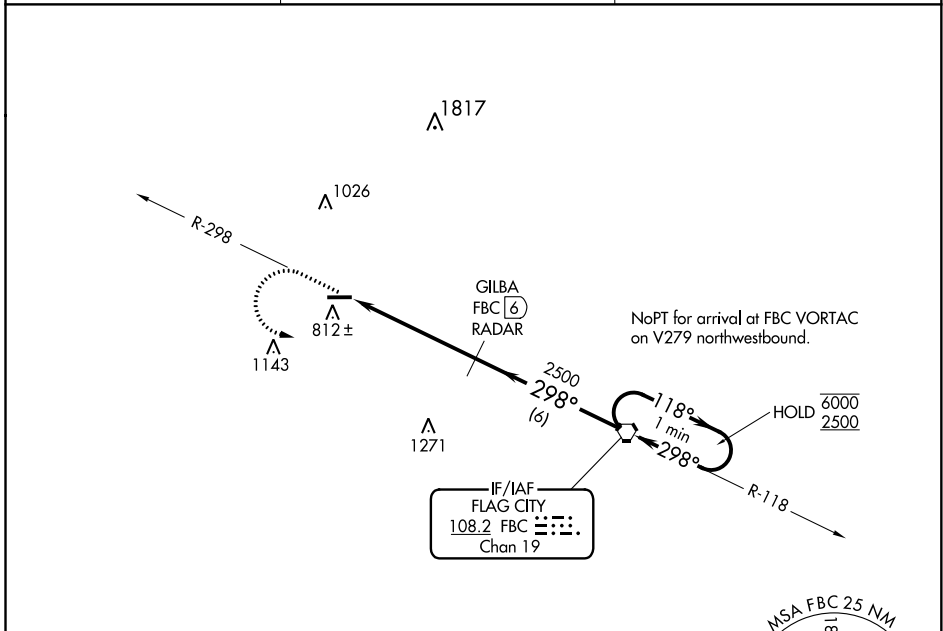
PUTNAM COUNTY (OWX)

RADAR or DME required.

▼ Rwy 27 helicopter visibility reduction below 1 SM NA.
▲ NA Straight-in, Circling Rwy 27 NA at night.

MISSED APPROACH: Climb to 2500 on FBC VORTAC R-298 then left turn direct FBC VORTAC and hold.

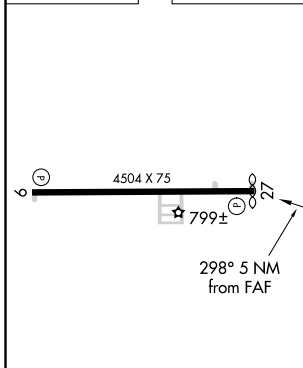
AWOS-3 120.525	TOLEDO APP CON 120.8 317.55	UNICOM 122.7 (CTAF) 0
--------------------------	---------------------------------------	---------------------------------



EC-2, 02 DEC 2021 to 30 DEC 2021

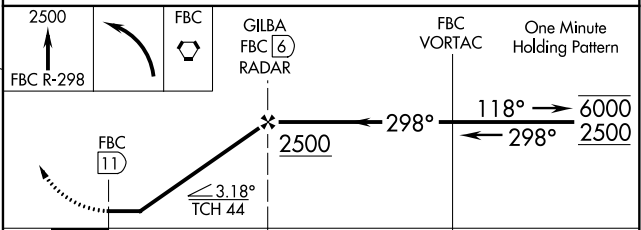
EC-2, 02 DEC 2021 to 30 DEC 2021

ELEV 763	TDZE 763
-----------------	-----------------



REIL Rwys 9 and 27 0
MRL Rwy 9-27 0

FAF to MAP 5 NM					
Knots	60	90	120	150	180
Min:Sec	5:00	3:20	2:30	2:00	1:40



CATEGORY	A	B	C	D
S-27	1220-1	457 (500-1)	NA	
CIRCLING	1220-1	457 (500-1)	NA	