

WAAS CH 86541 W18A	APP CRS 178°	Rwy Idg TDZE Apt Elev	4202 217 218
--	------------------------	-----------------------------	---

RNAV (GPS) RWY 18

SPRINGHILL (SPH)

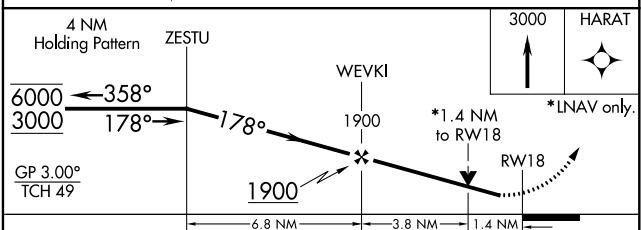
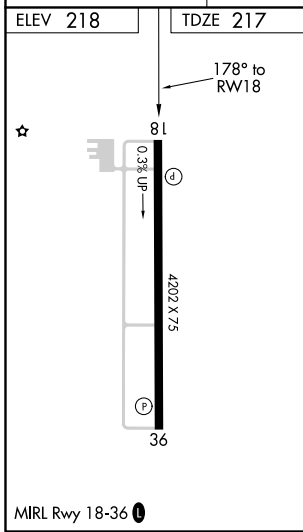
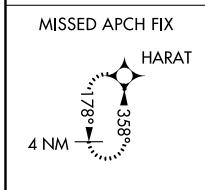
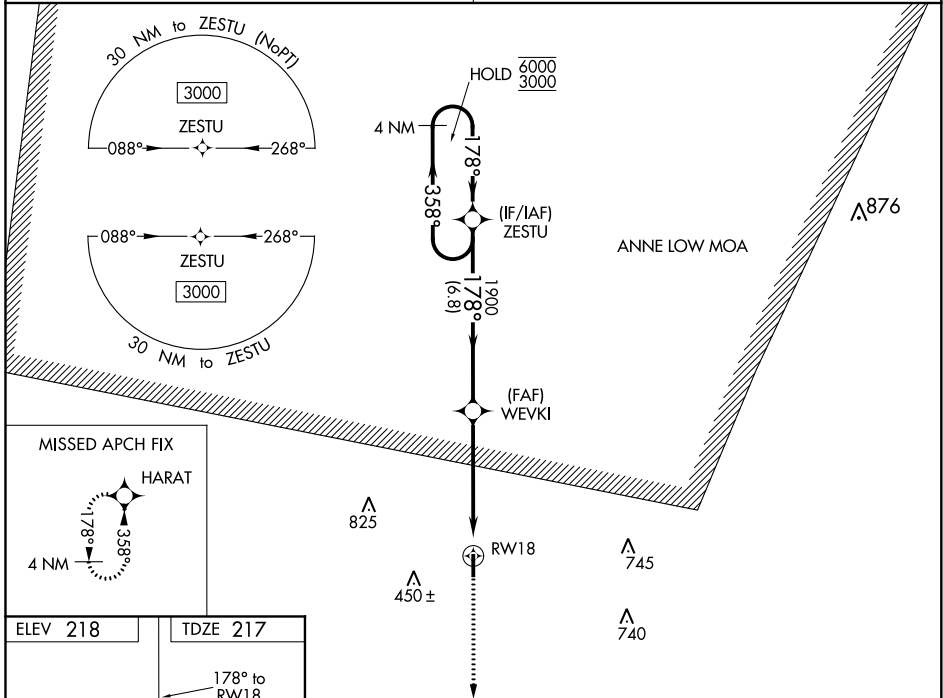
RNP APCH.

▽ Rwy 18 helicopter visibility reduction below 3/4 SM NA.
▲ NA For uncompensated Baro-VNAV systems, procedure NA below -15°C or above 54°C.

MISSED APPROACH: Climb to 3000 direct HARAT and hold.

SHREVEPORT APP CON
123.75 360.725

UNICOM
122.8 (CTAF) 0



CATEGORY	A	B	C	D
LPV DA	498-7/8	281 (300-7/8)		NA
LNAV/VNAV DA	496-7/8	279 (300-7/8)		NA
LNAV MDA	700-1	483 (500-1)	700-1 3/8 483 (500-1 3/8)	NA
C CIRCLING	700-1	482 (500-1)	820-1 1/2 602 (700-1 1/2)	NA

SC-4, 02 DEC 2021 to 30 DEC 2021

SC-4, 02 DEC 2021 to 30 DEC 2021