

WAAS CH <b>48837</b> <b>W22A</b>	APP CRS <b>218°</b>	Rwy Idg TDZE <b>5004</b> <b>2382</b> Apt Elev <b>2396</b>
--	------------------------	--

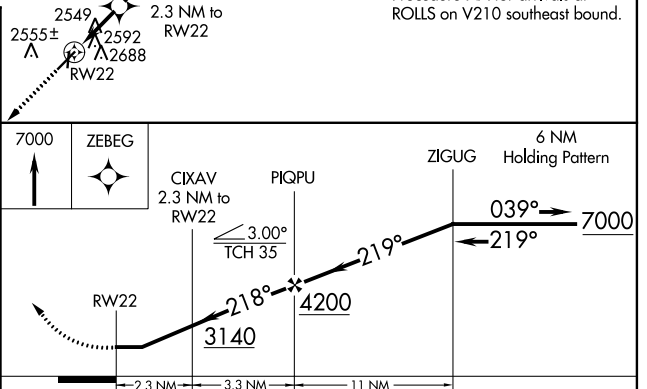
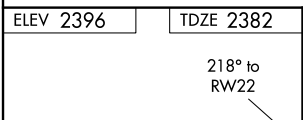
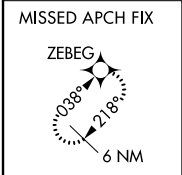
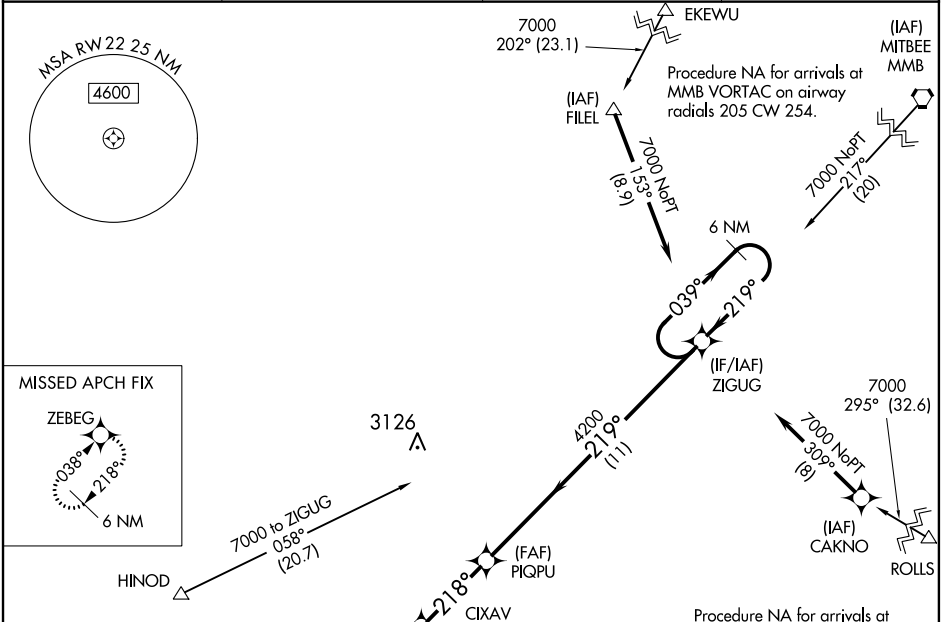
# RNAV (GPS) RWY 22

HEMPHILL COUNTY (HHF)

**⚠** DME/DME RNP-0.3 NA. When local altimeter setting not received, use Gage altimeter setting and increase all MDA 120 feet, increase LP and LNAV visibility Cat C and D 3/8 mile and Circling Cat C 1/2 mile. Helicopter visibility reduction below 3/4 SM NA. Circling Rwy 18, 36 NA at night.

**⚠** MISSED APPROACH: Climb to 7000 direct ZEBEG and hold, continue climb-in-hold to 7000.

AWOS-3 <b>119.025</b>	ALBUQUERQUE CENTER <b>127.85 285.475</b>	KANSAS CITY CENTER <b>126.95 379.2</b>	CTAF <b>122.9</b>
--------------------------	---	---	----------------------



CATEGORY	A	B	C	D
LP MDA	2800-1	418 (500-1)	2800-1 1/8	418 (500-1 1/8)
LNAV MDA	2860-1	478 (500-1)	2860-1 1/8	478 (500-1 1/8)
<b>C</b> CIRCLING	3040-1	644 (700-1)	3280-2 3/4 884 (900-2 3/4)	3340-3 944 (1000-3)

REIL Rwy 4 and 22  
MIRL Rwy 4-22 and 18-36

SC-2, 02 DEC 2021 to 30 DEC 2021

SC-2, 02 DEC 2021 to 30 DEC 2021