

WAAS CH 42637 W04A	APP CRS 038°	Rwy Idg TDZE Apt Elev	5004 2387 2396
--	------------------------	-----------------------------	---

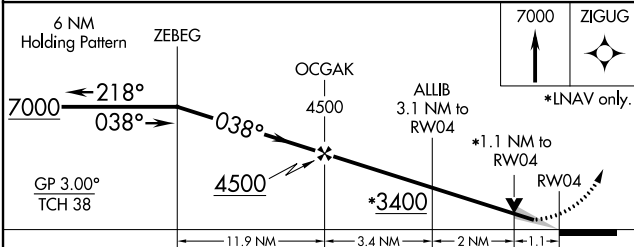
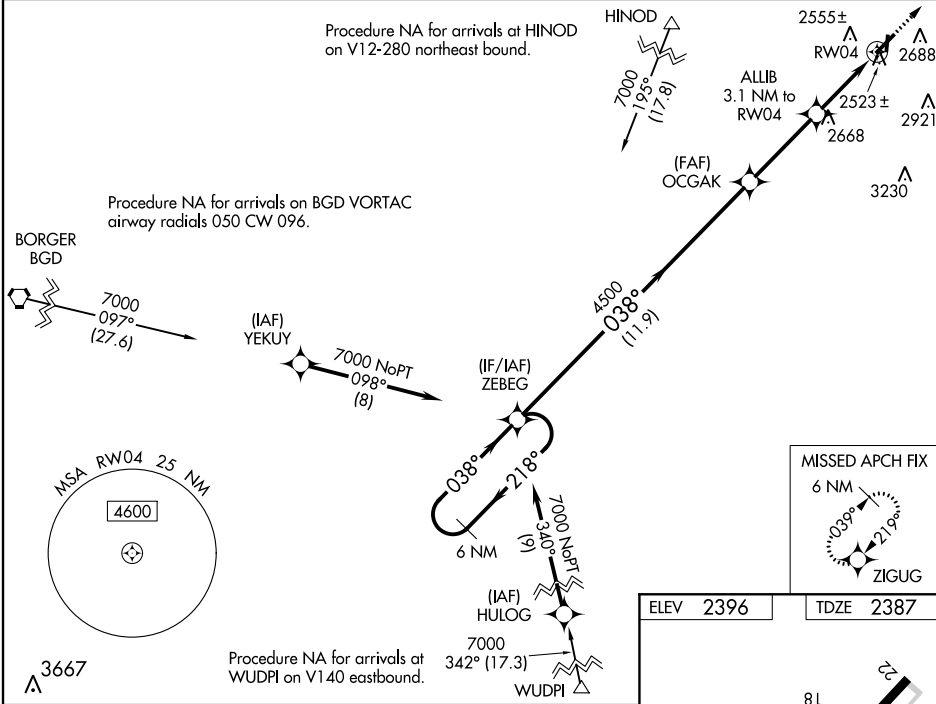
RNAV (GPS) RWY 4

HEMPHILL COUNTY (HHF)

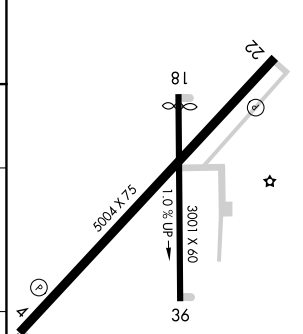
⚠ DME/DME RNP-0.3 NA. Circling NA to Rwy 18 and 36. For uncompensated Baro-VNAV systems, LNAV/VNAV NA below -19°C (-2°F) or above 54°C (130°F). When local altimeter setting not received, use Gage altimeter setting; increase LPV DA to 2751 and all visibilities ¼ mile and LNAV/VNAV DA to 2798 and all visibilities ⅜ mile; increase all MDA 120 feet and visibility LNAV Cat C and D and Circling Cat C ¼ mile. VDP and Baro-VNAV NA when using Gage altimeter setting.

MISSED APPROACH: Climb to 7000 direct ZIGUG and hold, continue climb-in-hold to 7000.

AWOS-3 119.025	ALBUQUERQUE CENTER 127.85 285.475	KANSAS CITY CENTER 126.95 379.2	CTAF 122.9 0
--------------------------	---	---	------------------------



ELEV 2396	TDZE 2387
-----------	-----------



CATEGORY	A	B	C	D
LPV DA		2637-1	250 (300-1)	
LNAV/VNAV DA		2684-1	297 (300-1)	
LNAV MDA	2780-1	393 (400-1)	2780-1½	393 (400-1½)
CIRCLING	3040-1	644 (700-1)	3280-2¾ 884 (900-2¾)	3340-3 944 (1000-3)

MIRL Rwy 4-22 and 18-36 0
REIL Rwys 4 and 22

SC-2, 02 DEC 2021 to 30 DEC 2021

SC-2, 02 DEC 2021 to 30 DEC 2021