

WAAS CH 97416 W25A	APP CRS 252°	Rwy Idg TDZE 643 Apt Elev 643
--	------------------------	---

RNAV (GPS) RWY 25

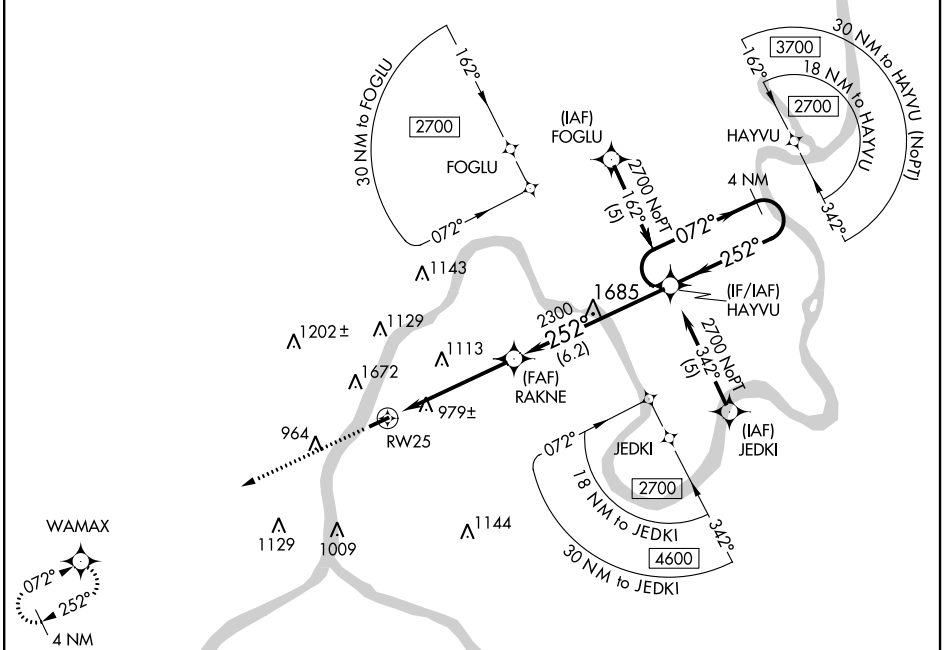
MASON COUNTY (3I2)

▼ Circling NA NW of Rwy 7-25. Baro-VNAV NA when using Athens/Albany, OH altimeter setting. For uncompensated Baro-VNAV systems, LNAV/VNAV NA below -16° C (4°F) or above 47° C (116°F). DME/DME RNP - 0.3 NA. Visibility reduction by helicopters NA. When local altimeter setting not received, use Athens/Albany, OH altimeter setting and increase all DA 61 feet and all MDA 80 feet; increase LPV all Cats visibility ¼ mile and increase LNAV-VNAV all Cats visibility 1 mile.

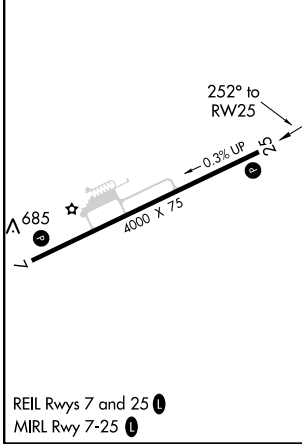
▲ MISSED APPROACH: Climb to 3200 direct WAMAX and hold.

☁ -17°C

AWOS-3 119.675	HUNTINGTON APP CON 128.4 270.1	UNICOM 122.8 (CTAF) 0
--------------------------	--	---------------------------------



ELEV 643	TDZE 643
----------	----------



	3200	WAMAX					4 NM Holding Pattern
			RAKNE		HAYVU		
							2700
							GP 3.00° TCH 54
CATEGORY	A	B	C	D			
LPV DA		1430-2¾	787 (800-2¾)				
LNAV/VNAV DA		1727-4	1084 (1100-4)				
LNAV MDA	1700-1¼ 1057 (1100-1¼)	1700-1½ 1057 (1100-1½)	1700-3	1057 (1100-3)			
CIRCLING	1700-1¼ 1057 (1100-1¼)	1700-1½ 1057 (1100-1½)	1700-3	1057 (1100-3)			

NE-4, 02 DEC 2021 to 30 DEC 2021

NE-4, 02 DEC 2021 to 30 DEC 2021