

APP CRS 297°	Rwy Idg 5100
	TDZE 4148
	Apt Elev 4159

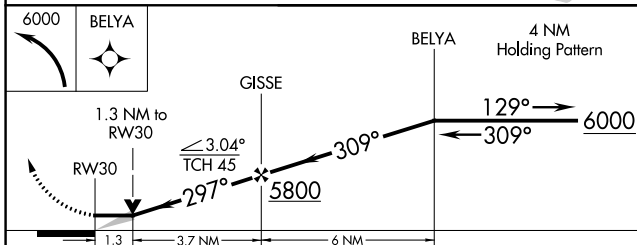
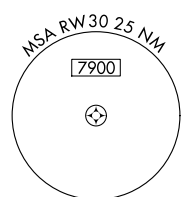
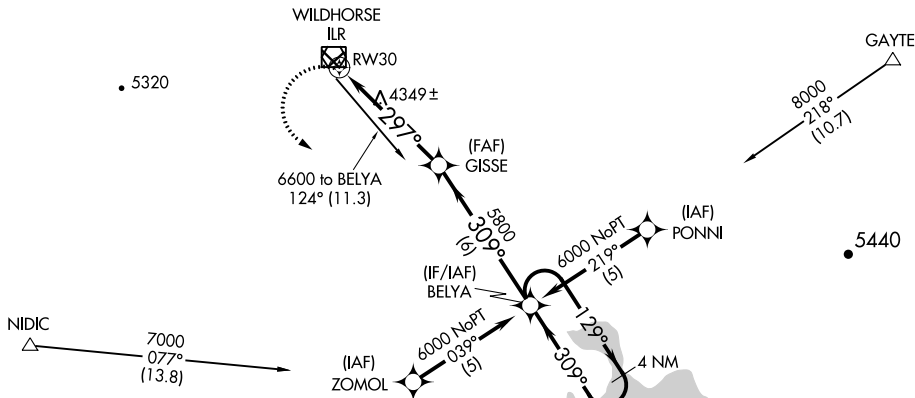
RNAV (GPS) RWY 30

BURNS MUNI (BNO)

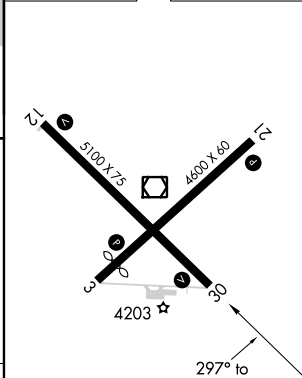
DME/DME RNP- 0.3 NA.		MISSED APPROACH: Climbing left turn to 6000 direct BELYA and hold.
----------------------	--	--------------------------------------------------------------------

ASOS 135.575	SALT LAKE CENTER 128.05 306.95	UNICOM 122.8 (CTAF)
------------------------	------------------------------------------	-------------------------------

Procedure NA for arrivals on ILR VOR/DME airway radial 123.



ELEV 4159	TDZE 4148
-----------	-----------



CATEGORY	A	B	C	D
LNVA MDA	4600-1	452 (500-1)	4600-1½ 452 (500-1½)	4600-1½ 452 (500-1½)
CIRCLING	4660-1 501 (600-1)	4720-1 561 (600-1)	4740-1½ 581 (600-1½)	4740-2 581 (600-2)

REIL Rwy 3, 12, 21 and 30
 MIRL Rwy 3-21 and 12-30

NW-1, 02 DEC 2021 to 30 DEC 2021

NW-1, 02 DEC 2021 to 30 DEC 2021