

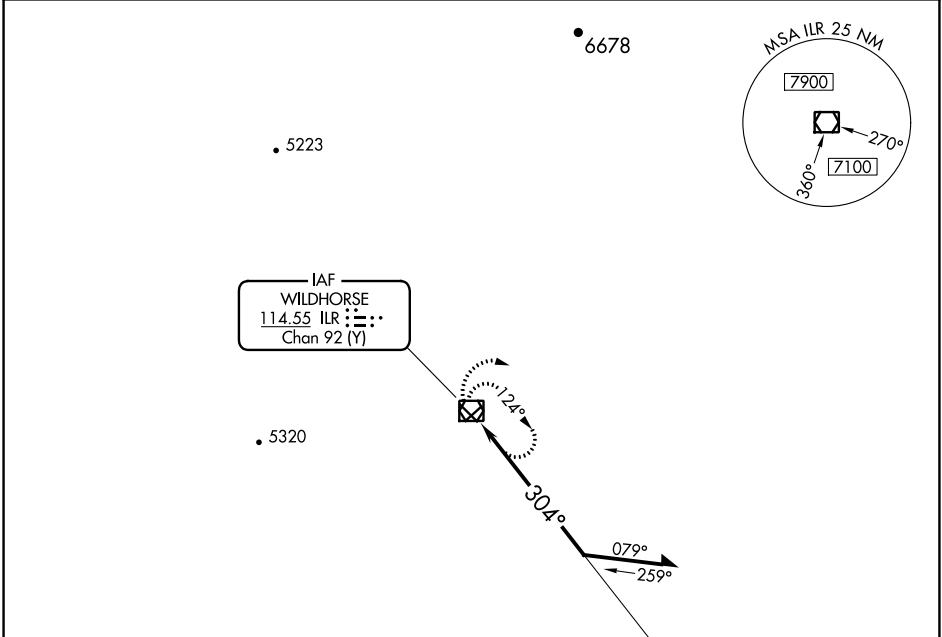
VOR/DME ILR 114.55 Chan 92 (Y)	APP CRS 304°	Rwy Idg TDZE Apt Elev 5100 4148 4159
--	------------------------	--

VOR RWY 30

BURNS MUNI (BNO)

▲ MISSED APPROACH: Climbing right turn to 8000 in ILR VOR/DME holding pattern.

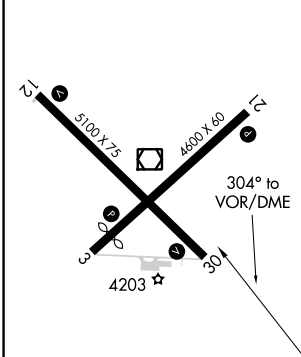
ASOS 135.575	SALT LAKE CENTER 128.05 306.95	UNICOM 122.8 (CTAF)
------------------------	--	-------------------------------



NW-1, 02 DEC 2021 to 30 DEC 2021

NW-1, 02 DEC 2021 to 30 DEC 2021

ELEV 4159	TDZE 4148
-----------	-----------



8000	ILR	ILR VOR/DME	7000	Remain within 10 NM
		ILR 4.5		
		0.4	4.1 NM	

CATEGORY	A	B	C	D
S-30	5500-1¼ 1352 (1400-1¼)	5500-1½ 1352 (1400-1½)	5500-3	1352 (1400-3)
CIRCLING	5500-1¼ 1341 (1400-1¼)	5500-1½ 1341 (1400-1½)	5500-3	1341 (1400-3)

REIL Rwy 3, 12, 21 and 30 **Ⓛ**
MIRL Rwy 3-21 and 12-30 **Ⓛ**