

VOR/DME CHE <b>115.6</b> Chan <b>103</b>	APP CRS <b>247°</b>	Rwy Idg TDZE <b>6198</b> Apt Elev <b>6198</b>
--	------------------------	---

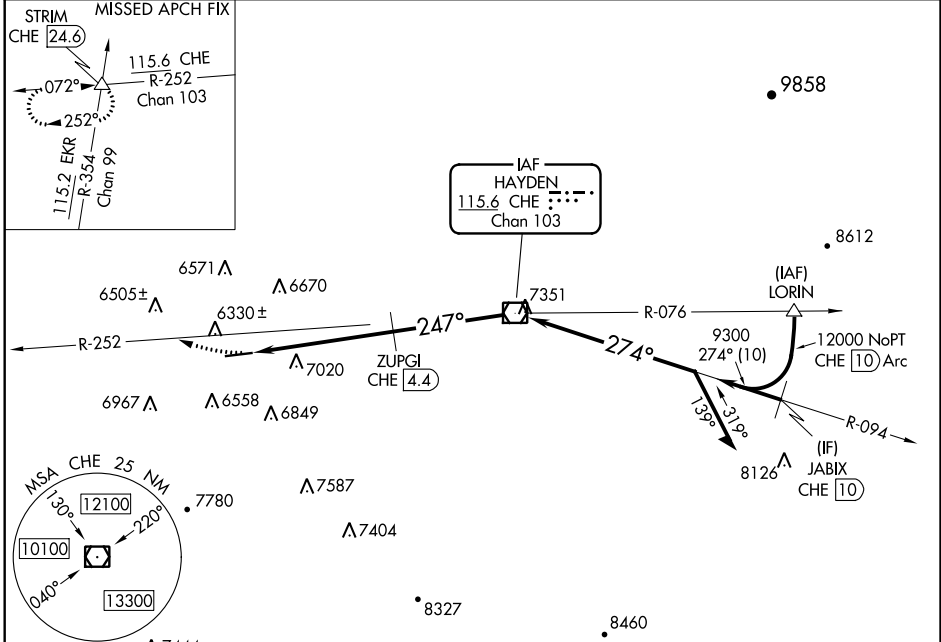
# VOR RWY 25

CRAIG-MOFFAT (CAG)

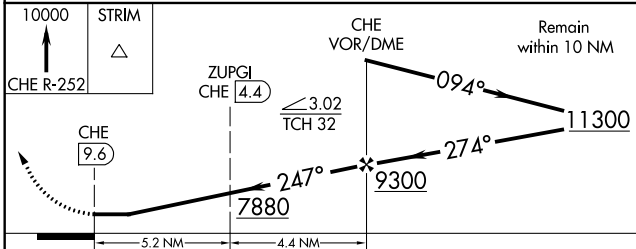
**⚠** Rwy 25 helicopter visibility reduction below 1 SM NA. Straight-in and Circling to Rwy 25 NA at night.  
**❄** -31°C Circling NA for Cat D south of Rwy 7-25.

MISSED APPROACH: Climb to 10000 on CHE VOR/DME R-252 to STRIM INT/24.6 DME and hold.

ASOS <b>135.425</b>	DENVER CENTER <b>120.475 235.975</b>	UNICOM <b>122.8 (CTAF) ①</b>
------------------------	---	---------------------------------



ELEV 6198	TDZE 6198
-----------	-----------



ELEV 6198		TDZE 6198	
REIL Rwys 7 and 25 ①			
MIRL Rwy 7-25 ①			
FAF to MAP 9.6 NM			
Knots	60	90	120 150 180
Min:Sec	9:36	6:24	4:48 3:50 3:12

CATEGORY	A	B	C	D
S-25	7880-1¼ 1682 (1700-1¼)	7880-1½ 1682 (1700-1½)	7880-3	1682 (1700-3)
<b>C</b> CIRCLING	7880-1¼ 1682 (1700-1¼)	7880-1½ 1682 (1700-1½)	7880-3	1682 (1700-3)
ZUPGI FIX MINIMUMS				
S-25	7280-1¼ 1082 (1100-1¼)	7280-1½ 1082 (1100-1½)	7280-3	1082 (1100-3)
<b>C</b> CIRCLING	7280-1¼ 1082 (1100-1¼)	7320-1½ 1122 (1200-1½)	7720-3	1522 (1600-3)

SW-1, 02 DEC 2021 to 30 DEC 2021

SW-1, 02 DEC 2021 to 30 DEC 2021