

WAAS CH 82311 W22A	APP CRS 218°	Rwy Idg TDZE Apt Elev	6000 1025 1025
--	------------------------	-----------------------------	---

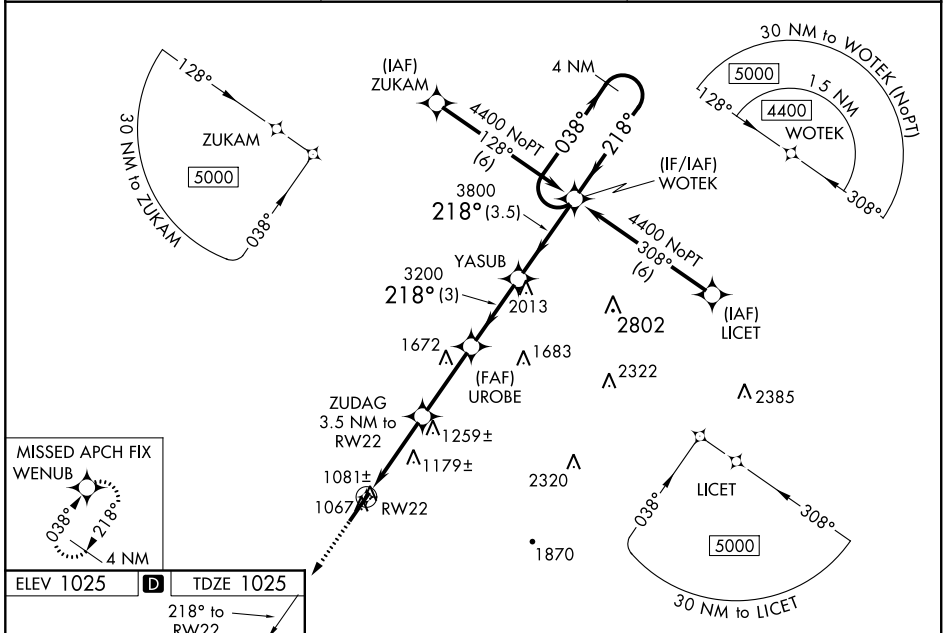
RNAV (GPS) RWY 22

UPPER CUMBERLAND RGNL (SR.B)

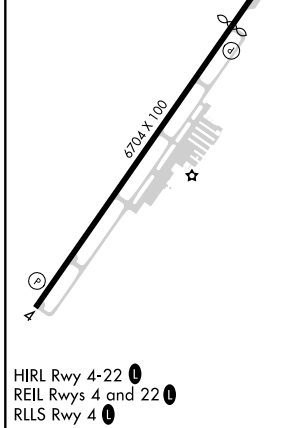
⚠ Baro-VNAV NA when using Crossville altimeter setting. For uncompensated Baro-VNAV NA systems, LNAV/VNAV NA below -17°C (2°F) or above 54°C (130°F). DME/DME RNP-0.3 NA. When local altimeter setting not received, use Crossville altimeter setting and increase LPV DA to 1447, LNAV/VNAV DA to 1633. Increase LPV and LNAV/VNAV visibility ¾ mile. Increase all MDA 180 feet and LNAV Cat C visibility ¼ mile, Cat D ½ mile. Increase Circling Cat C/D visibility ¼ mile. VDP NA when using Crossville altimeter setting.

MISSED APPROACH: Climb to 4000 direct WENUB and hold.

AWOS-3 128.25	MEMPHIS CENTER 132.9 290.3	UNICOM 122.975 (CTAF)
-------------------------	--------------------------------------	---------------------------------



ELEV 1025	TDZE 1025
-----------	-----------



4000 WENUB	VGSI and RNAV glidepath not coincident (VGSI Angle 3.00/TCH 25).	4 NM WOTEK Holding Pattern
*LNAV only	ZUDAG 3.5 NM to RW22	UROBE 3200
	*1.2 NM to RW22	*2200
		3200
		3800
		4400
		GP 3.00° TCH 55

CATEGORY	A	B	C	D
LPV DA	1275-¾ 250 (300-¾)			
LNAV/VNAV DA	1461-1½ 436 (500-1½)			
LNAV MDA	1440-1	415 (500-1)	1440-1¼	415 (500-1¼)
CIRCLING	1480-1	455 (500-1)	1480-1½	1580-2 555 (600-2)

SE-1, 02 DEC 2021 to 30 DEC 2021

SE-1, 02 DEC 2021 to 30 DEC 2021