

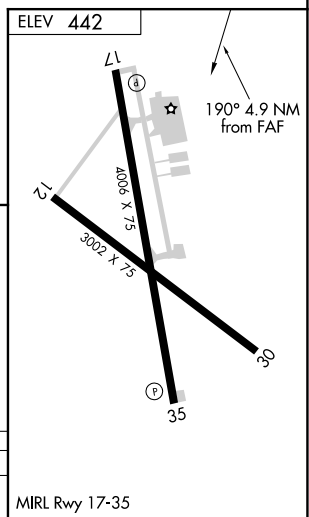
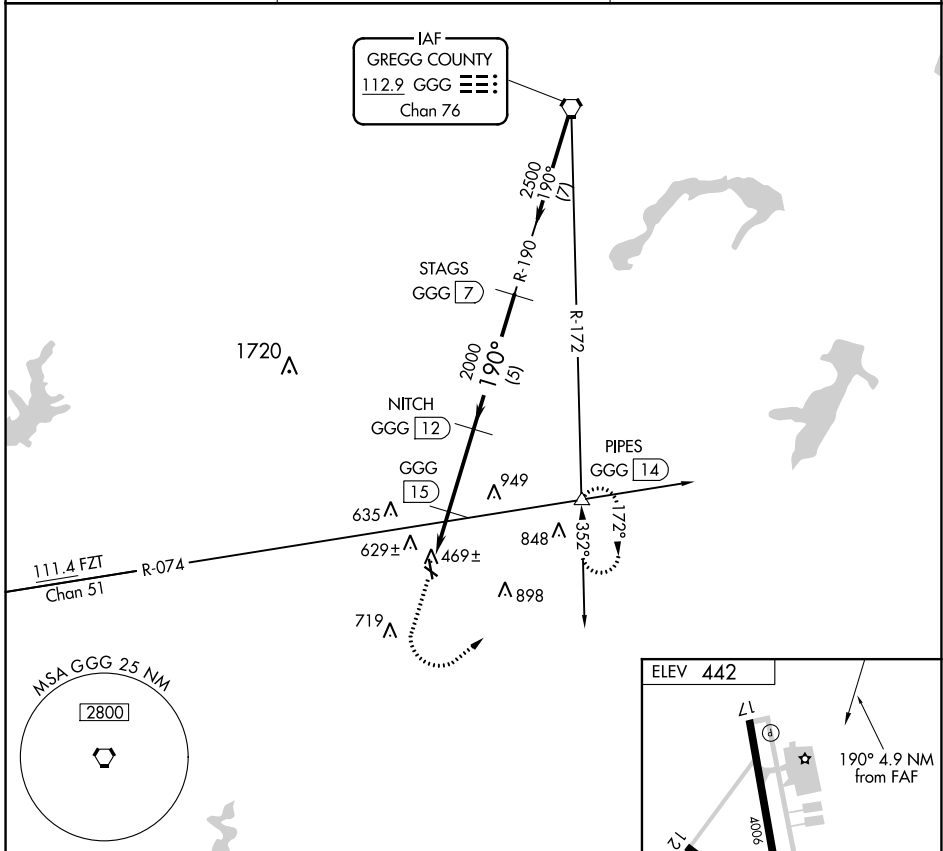
VORTAC GGG <b>112.9</b> Chan 76	APP CRS <b>190°</b>	Rwy Idg TDZE Apt Elev	<b>N/A</b> <b>N/A</b> <b>442</b>
---------------------------------------	------------------------	--------------------------	--

**VOR/DME-A**  
RUSK COUNTY (R.F.I)

**NA** When local altimeter setting not received, use Longview altimeter setting and increase all MDAs 60 feet and Circling Cat C visibility 1/4 SM. Circling Rwy 12, 17 and 30 NA at night.

MISSED APPROACH: Climb to 1800 then climbing left turn to 2500 via heading 045° and GGG R-172 to PIPES INT/14 DME and hold.

AWOS-3 <b>119,375</b>	LONGVIEW APP CON ★ <b>124,275 257,975</b>	UNICOM <b>122.8</b> (CTAF)
--------------------------	--	-------------------------------



1800	2500	hdg 045°	GGG R-172	PIPES GGG 14	NITCH GGG 12	STAGS GGG 7
		Procedure Turn NA				
1.9 NM		3 NM		5 NM		
CATEGORY	A	B	C	D		
CIRCLING	1220-1 778 (800-1)	1220-1 1/4 778 (800-1 1/4)	1220-2 1/4 778 (800-2 1/4)	NA		

SC-2, 02 DEC 2021 to 30 DEC 2021

SC-2, 02 DEC 2021 to 30 DEC 2021