

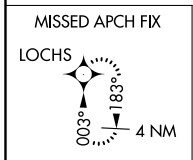
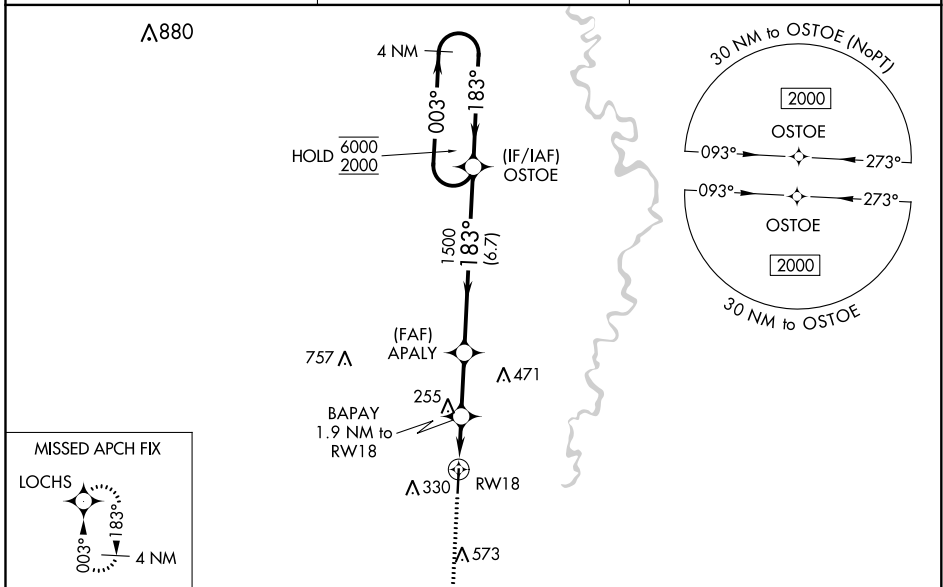
WAAS CH <b>72613</b> <b>W18A</b>	APP CRS <b>183°</b>	Rwy Idg TDZE <b>119</b> Apt Elev <b>119</b>	<b>5002</b>
--	------------------------	---	-------------

# RNAV (GPS) RWY 18

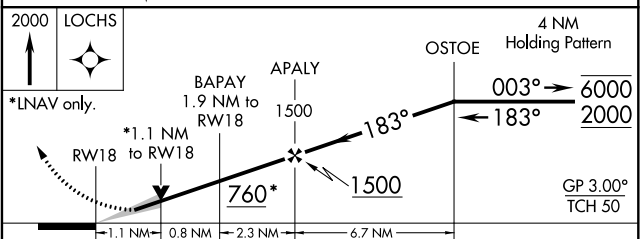
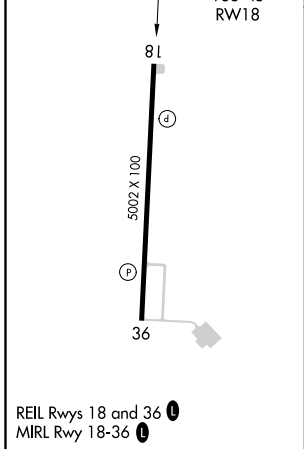
GEORGE R CARR MEML AIR FLD (B.X.A)

RNP APCH.	MISSED APPROACH: Climb to 2000 direct LOCHS and hold.
For uncompensated Baro-VNAV systems, procedure NA below -15°C or above 54°C.	

AWOS-3PT <b>118.025</b>	HOUSTON CENTER <b>126.8 327.8</b>	UNICOM <b>122.8 (CTAF) 0</b>
----------------------------	--------------------------------------	---------------------------------



ELEV <b>119</b>	TDZE <b>119</b>
-----------------	-----------------



CATEGORY	A	B	C	D
LPV DA	387-1		268 (300-1)	NA
LNAV/VNAV DA	554-1 <sup>3</sup> / <sub>8</sub>		435 (500-1 <sup>1</sup> / <sub>8</sub> )	NA
LNAV MDA	520-1 401 (500-1)		520-1 <sup>1</sup> / <sub>8</sub> 401 (500-1 <sup>1</sup> / <sub>8</sub> )	NA
CIRCLING	620-1 501 (600-1)	720-1 601 (700-1)	880-2 <sup>1</sup> / <sub>4</sub> 761 (800-2 <sup>1</sup> / <sub>4</sub> )	NA

SC-4, 02 DEC 2021 to 30 DEC 2021

SC-4, 02 DEC 2021 to 30 DEC 2021