

WAAS CH 62913 W36A	APP CRS 003°	Rwy Idg 5002 TDZE 117 Apt Elev 119
--	------------------------	---

RNAV (GPS) RWY 36

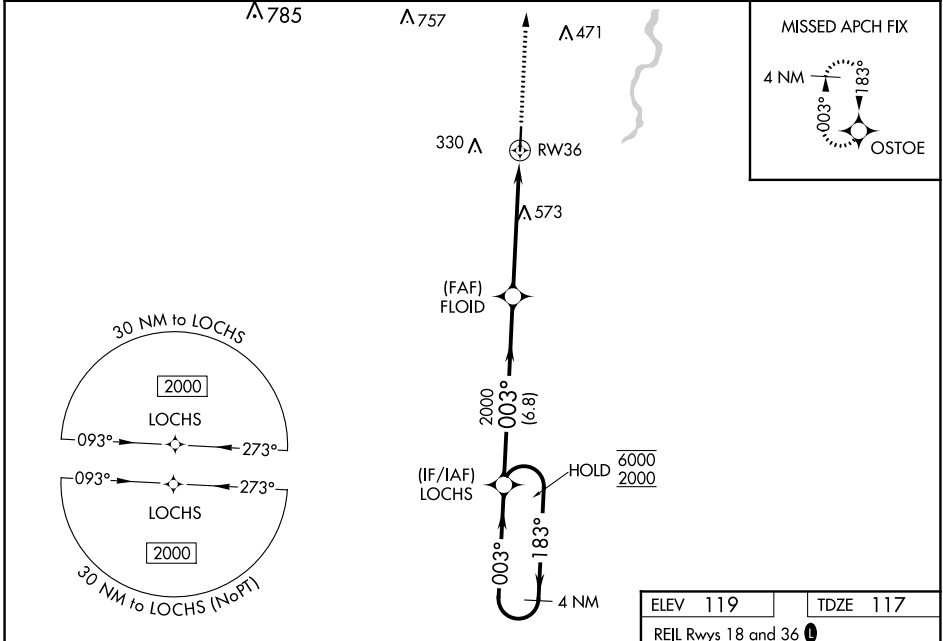
GEORGE R CARR MEML AIR FLD (B.X.A)

RNP APCH.

⚠ Rwy 36 helicopter visibility reduction below 3/4 SM NA.
For uncompensated Baro-VNAV systems, LNAV/VNAV NA below -15°C or above 54°C.

MISSED APPROACH: Climb to 2000 direct OSTOE and hold.

AWOS-3PT 118.025	HOUSTON CENTER 126.8 327.8	UNICOM 122.8 (CTAF) 0
----------------------------	--------------------------------------	---------------------------------



SC-4, 02 DEC 2021 to 30 DEC 2021

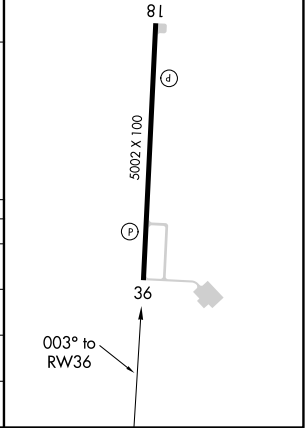
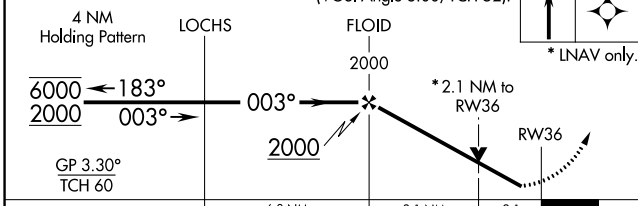
SC-4, 02 DEC 2021 to 30 DEC 2021

VGSI and RNAV glidepath not coincident (VGSI Angle 3.00/TCH 52).

ELEV 119 TDZE 117

REIL Rwy 18 and 36 **0**

MIRL Rwy 18-36 **0**



CATEGORY	A	B	C	D
LPV DA	421-1	304 (400-1)		NA
LNAV/VNAV DA	512-1 1/8	395 (400-1 1/8)		NA
LNAV MDA	840-1 723 (800-1)		840-2 723 (800-2)	NA
CIRCLING	840-1 721 (800-1)		880-2 1/4 761 (800-2 1/4)	NA