

APP CRS	Rwy Idg	N/A
<b>251°</b>	TDZE	N/A
	Apt Elev	<b>6547</b>

# RNAV (GPS)-D

EAGLE COUNTY RGNL (EGE)

RNP APCH.

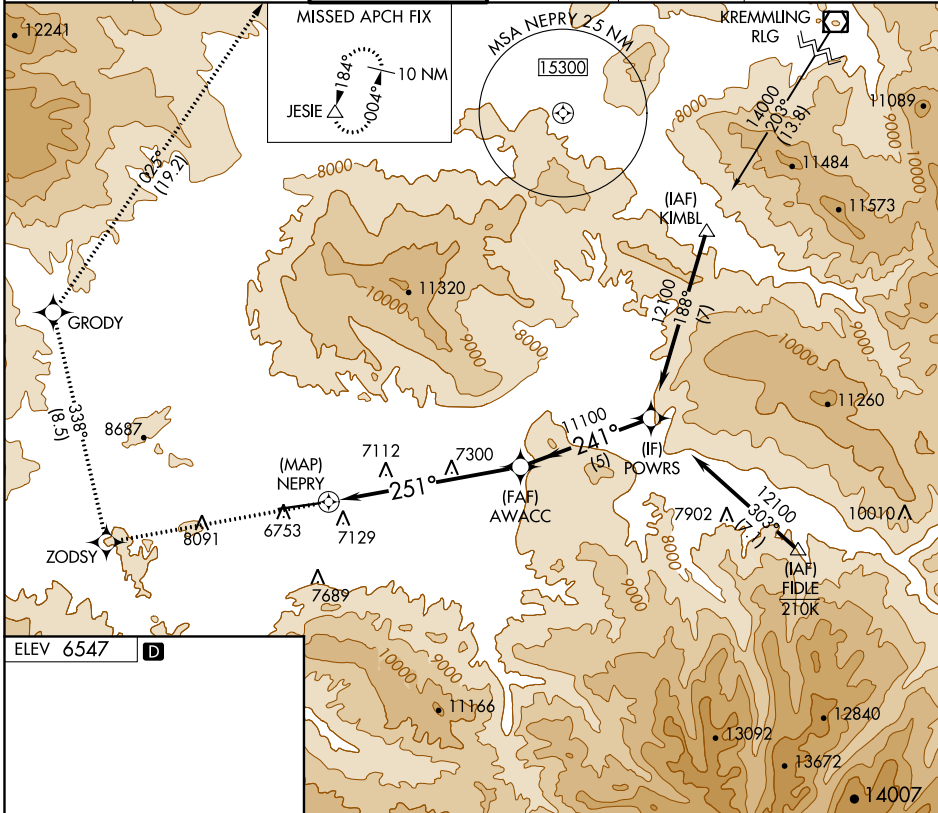
**V** Circling to Rwy 7 NA at night. Circling NA for Cats C and D south of Rwy 7-25. Rwy 7 helicopter visibility reduction below 1 SM NA. Rwy 25 helicopter visibility reduction below ¾ SM NA. Inoperative table does not apply.

**A**

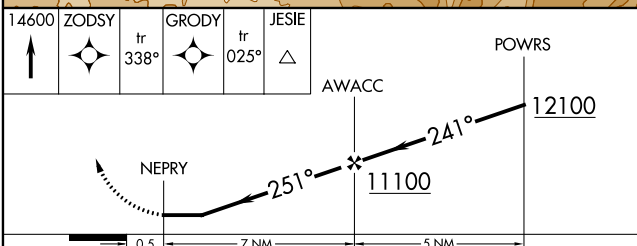
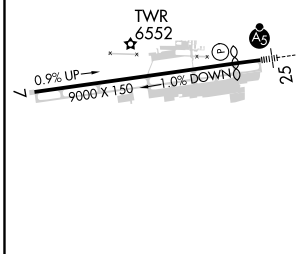
**35** -21°C

**MISSED APPROACH:** (Do not exceed 185K until GRODY) Climb to 14600 direct ZODSY then on track 338° to GRODY and on track 025° to JESIE and hold, continue climb in-hold to 14600.

ATIS <b>135.575</b>	DENVER CENTER <b>128.65 282.2</b>	EAGLE TOWER * <b>119.8 (CTAF)</b>	GND CON <b>121.8</b>	CLNC DEL <b>124.75</b>	DENVER CLNC DEL <b>124.75</b> (When tower closed)
------------------------	--------------------------------------	--------------------------------------	-------------------------	---------------------------	---



ELEV 6547 **D**



CATEGORY	A	B	C	D
<b>C</b> CIRCLING	9220-1¼ 2673 (2700-1¼)	9220-1½ 2673 (2700-1½)	9220-3	2673 (2700-3)

SW-1, 02 DEC 2021 to 30 DEC 2021

SW-1, 02 DEC 2021 to 30 DEC 2021