

WAAS CH 63016 W01A	APP CRS 014°	Rwy Idg TDZE Apt Elev	6001 3706 3706
--	------------------------	-----------------------------	---

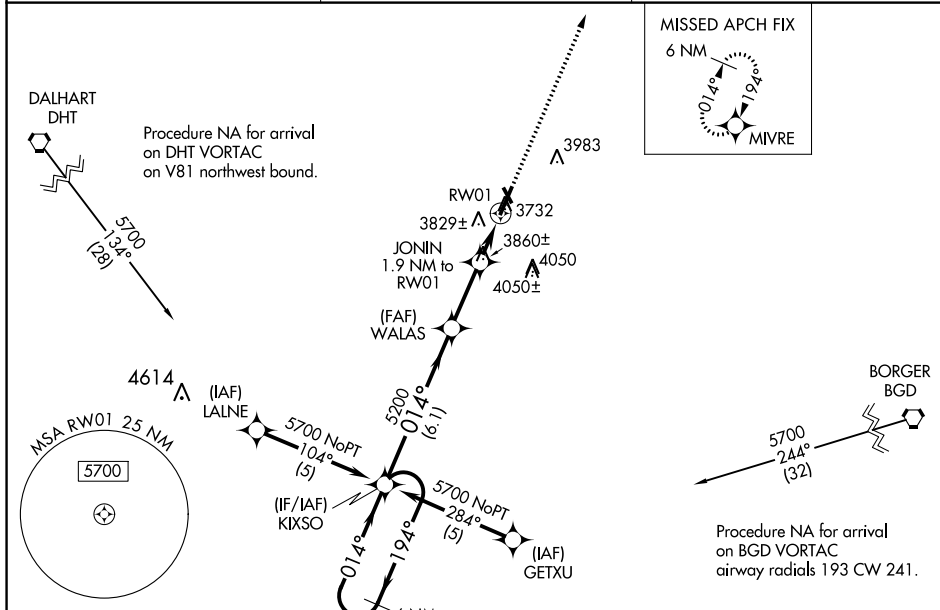
RNAV (GPS) RWY 1

MOORE COUNTY (DUX)

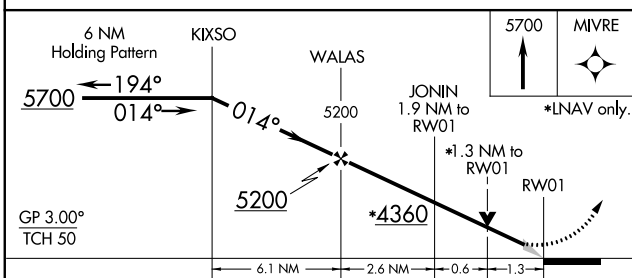
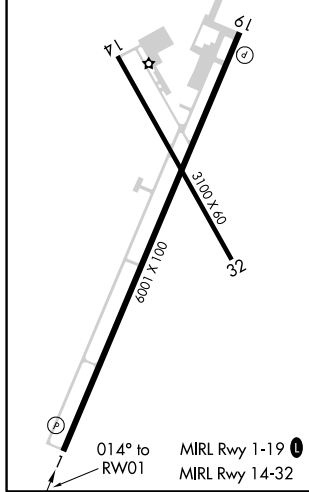
Baro-VNAV NA when using Dalhart altimeter setting. For uncompensated Baro-VNAV systems, LNAV/VNAV NA below -22°C (-7°F) or above 41°C (105°F). DME/DME RNP-0.3 NA. When local altimeter setting not received, use Dalhart altimeter setting and increase LPV DA to 4010 feet, LNAV/VNAV DA to 4236 feet, and all MDAs 120 feet, increase LNAV/VNAV all Cats, LNAV Cats C/D ¼ SM and Circling Cats C/D visibility ½ SM. VDP NA with Dalhart altimeter setting. Night landing: Rwy 14, 32 NA.

MISSED APPROACH: Climb to 5700 direct to MIVRE and hold.

AWOS-3 118.075	ALBUQUERQUE CENTER 127.85 285.475	UNICOM 122.8 (CTAF) 0
--------------------------	---	---------------------------------



ELEV 3706	TDZE 3706
------------------	------------------



CATEGORY	A	B	C	D
LPV DA	3906-1		200 (200-1)	
LNAV/VNAV DA	4132-1½		426 (500-1½)	
LNAV MDA	4160-1	454 (500-1)	4160-1¼ 454 (500-1¼)	4160-1½ 454 (500-1½)
CIRCLING	4160-1 454 (500-1)	4300-1 594 (600-1)	4400-2 694 (700-2)	4400-2¼ 694 (700-2¼)