

WAAS CH <b>69416</b> <b>W19A</b>	APP CRS <b>194°</b>	Rwy Idg TDZE Apt Elev <b>6001</b> <b>3701</b> <b>3706</b>
--	------------------------	--

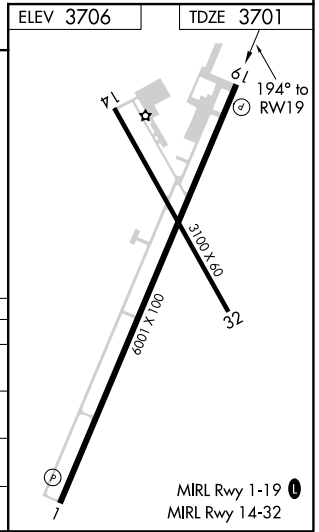
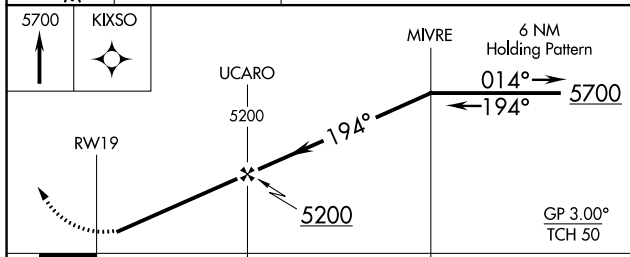
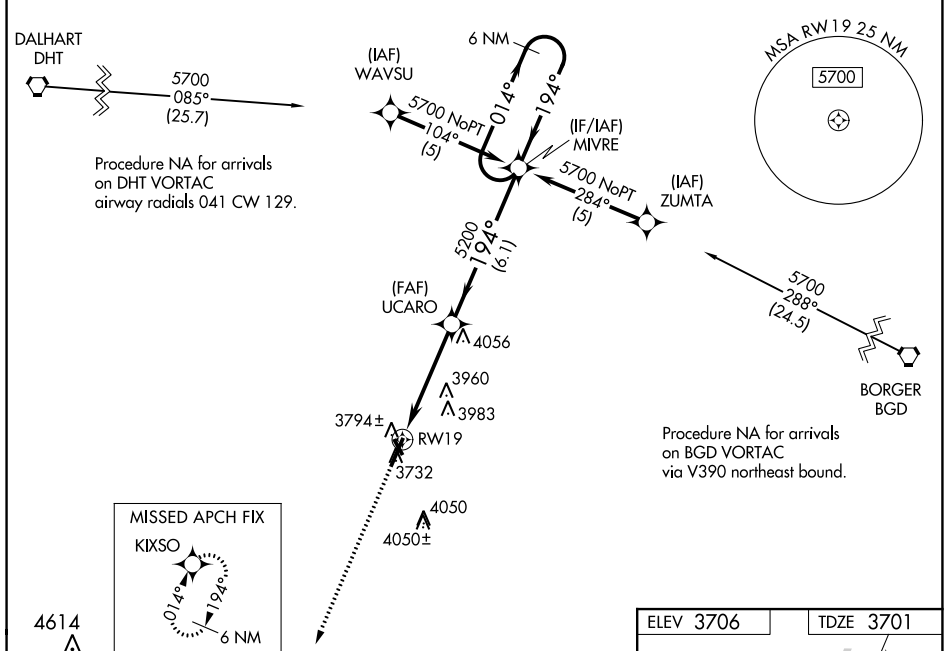
# RNAV (GPS) RWY 19

MOORE COUNTY (DUX)

▼ Baro-VNAV NA when using Dalhart altimeter setting. For uncompensated Baro-VNAV systems,  
 ▲ LNAV/VNAV NA below -22°C (-7°F) or above 41°C (105°F). DME/DME RNP-0.3 NA. Helicopter  
 visibility reduction below ¾ SM NA. When local altimeter setting not received, use Dalhart altimeter  
 setting and increase LPV DA to 4055 feet, LNAV/VNAV DA to 4480 feet, and all MDAs 120 feet;  
 increase LPV all Cats visibility ¼ SM, and LNAV/VNAV all Cats, LNAV and Circling Cats C/D visibility  
 ½ SM. Night landing: Rwy 14, 32 NA.

MISSED APPROACH:  
 Climb to 5700 direct  
 to KIXSO and hold.

AWOS-3 <b>118.075</b>	ALBUQUERQUE CENTER <b>127.85 285.475</b>	UNICOM <b>122.8 (CTAF) 0</b>
--------------------------	---	---------------------------------



CATEGORY	A	B	C	D
LPV DA	3951-1		250 (300-1)	
LNAV/VNAV DA	4340-2¼		639 (700-2¼)	
LNAV MDA	4260-1	559 (600-1)	4260-1½ 559 (600-1½)	4260-1¾ 559 (600-1¾)
CIRCLING	4260-1 554 (600-1)	4300-1 594 (600-1)	4400-2 694 (700-2)	4400-2¼ 694 (700-2¼)

SC-2, 02 DEC 2021 to 30 DEC 2021

SC-2, 02 DEC 2021 to 30 DEC 2021