

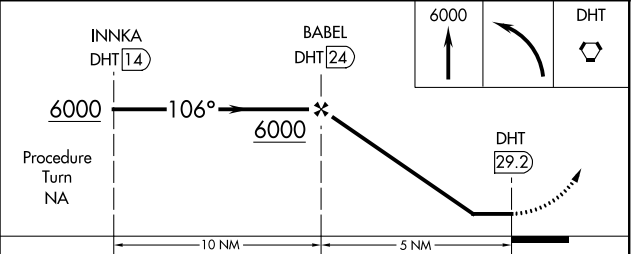
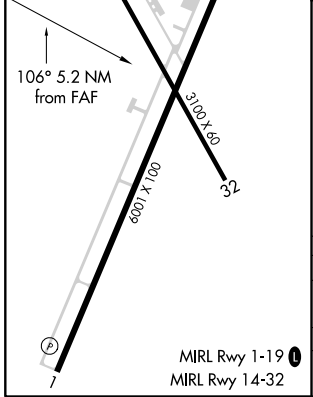
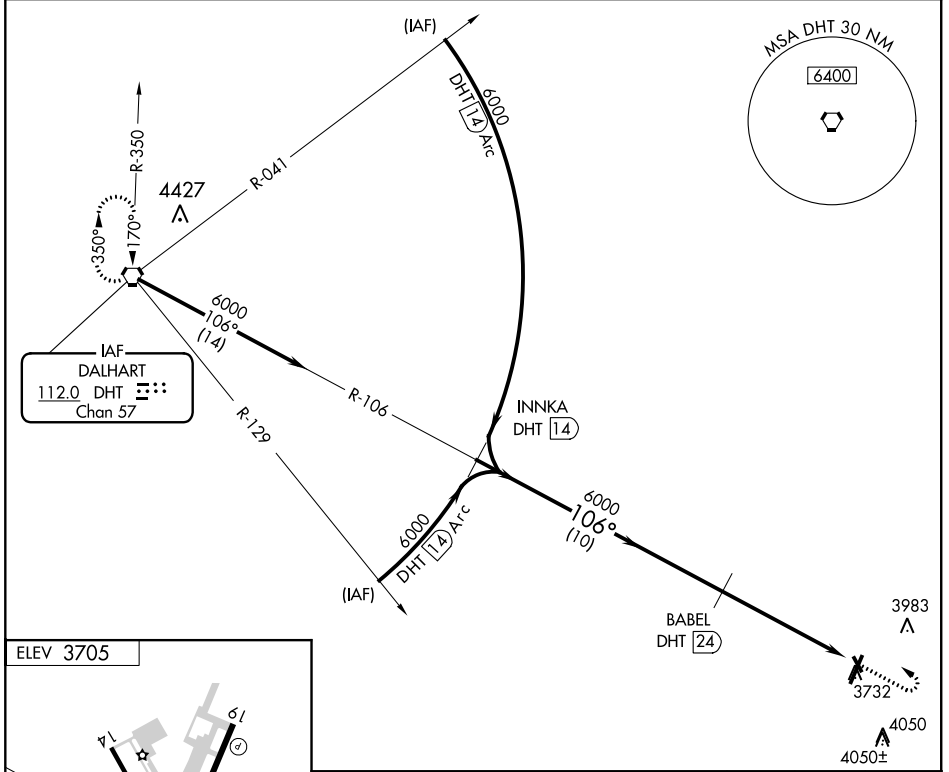
APP CRS <b>106°</b>	Rwy Idg TDZE Apt Elev	<b>N/A</b> <b>N/A</b> <b>3705</b>
------------------------	-----------------------------	---

**VOR/DME-A**  
MOORE COUNTY (DUX)

**NA** Obtain local altimeter on CTAF; when not received, use Amarillo altimeter setting. When neither received, procedure not authorized. Helicopter visibility reduction below 1 SM NA. Night landing: Rwy 14, 32 NA.

MISSED APPROACH: Climb to 6000 then turn left direct DHT VORTAC and hold.

AWOS-3 <b>118.075</b>	ALBUQUERQUE CENTER <b>127.85 285.475</b>	UNICOM <b>122.8 (CTAF) 0</b>
--------------------------	---	---------------------------------



CATEGORY	A	B	C	D
CIRCLING	4700-1¼ 995 (1000-1½)	4700-1½ 995 (1000-1½)	4700-3	995 (1000-3)
AMARILLO ALTIMETER SETTING MINIMUMS				
CIRCLING	4820-1¼ 1115 (1200-1½)	4820-1½ 1115 (1200-1½)	4820-3	1115 (1200-3)

SC-2, 02 DEC 2021 to 30 DEC 2021

SC-2, 02 DEC 2021 to 30 DEC 2021