

WAAS CH 99428 W32A	APP CRS 320°	Rwy Idg TDZE 1680 Apt Elev 1692	4301
--	------------------------	---	-------------

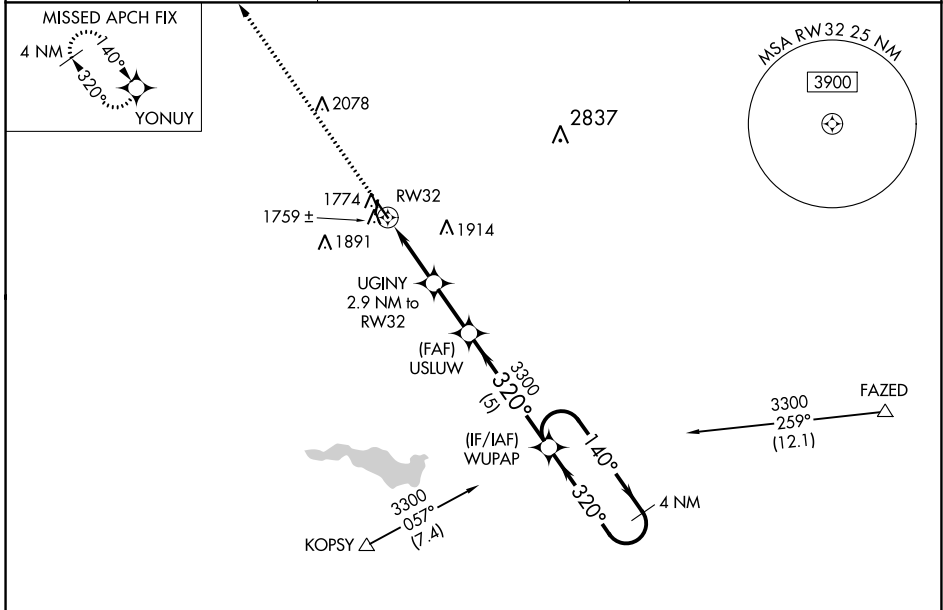
RNAV (GPS) RWY 32

SUPERIOR MUNI (12K)

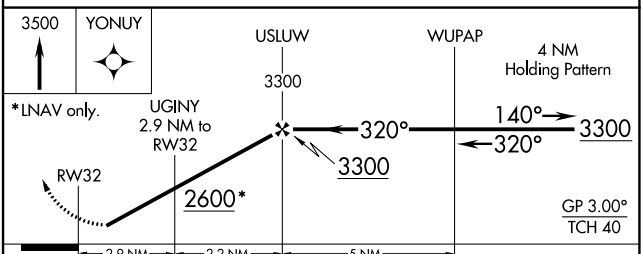
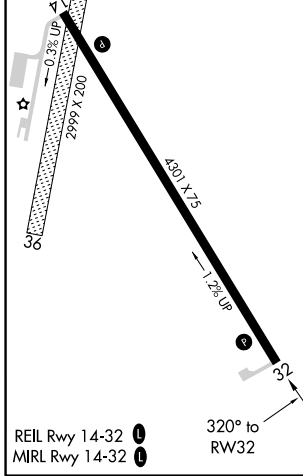
NA DME/DME RNP-0.3 NA. Rwy 32 helicopter visibility reduction below 3/4 SM NA. Baro-VNAV NA. Use Hebronn altimeter setting, when not received use Hastings altimeter setting and increase all DA 41 feet and all MDA 60 feet, increase LPV Cats A/B/C visibility to 1 1/4 and LNAV/VNAV Cats A/B/C visibility to 1 3/8, increase LNAV Cat C visibility to 1 1/2, increase Circling Cat C visibility to 2. Circling to Rwy 18/36 NA at night.

MISSED APPROACH: Climb to 3500 direct YONU and hold.

HJH AWOS-3 118.525	MINNEAPOLIS CENTER 119.4 278.8	UNICOM 123.0 (CTAF)
------------------------------	--	-------------------------------



ELEV 1692	TDZE 1680
-----------	-----------



CATEGORY	A	B	C	D
LPV DA	2014-1 1/8	334 (400-1 1/8)		NA
LNAV/VNAV DA	2054-1 1/4	374 (400-1 1/4)		NA
LNAV MDA	2160-1	480 (500-1)	2160-1 3/8 480 (500-1 3/8)	NA
CIRCLING	2360-1	668 (700-1)	2360-1 3/4 668 (700-1 3/4)	NA

NC-2, 02 DEC 2021 to 30 DEC 2021

NC-2, 02 DEC 2021 to 30 DEC 2021