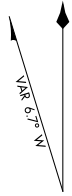


AIRPORT DIAGRAM

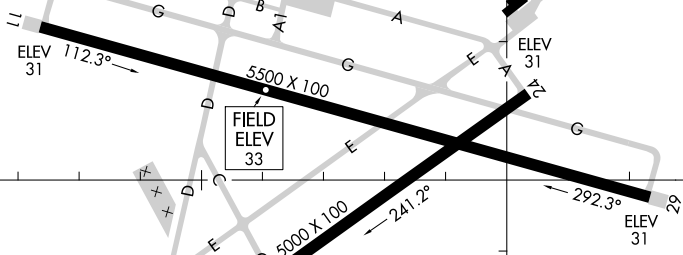
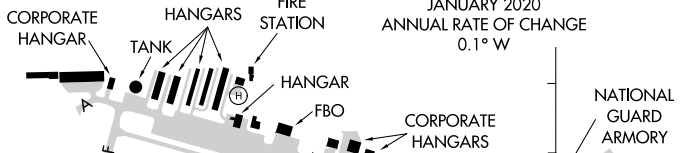
AL-6440 (FAA)

FLAGLER EXEC (FIN)
PALM COAST, FLORIDA

ATIS
 128.325
 FLAGLER TOWER ★
 118.95
 GND CON
 121.75
 CLNC DEL
 121.75



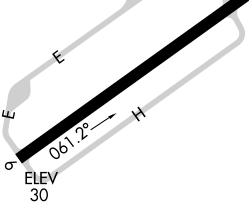
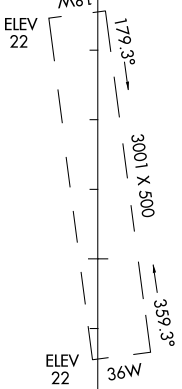
JANUARY 2020
 ANNUAL RATE OF CHANGE
 0.1° W



29°28'N

SE-3, 02 DEC 2021 to 30 DEC 2021

SE-3, 02 DEC 2021 to 30 DEC 2021



RWY 06-24
 PCN 19 F/B/Y/T
 S-60
 RWY 11-29
 PCN 27 F/A/X/T
 S-60

★
 TWR
 137±

CAUTION: BE ALERT TO RUNWAY CROSSING CLEARANCES.
READBACK OF ALL RUNWAY HOLDING INSTRUCTIONS IS REQUIRED.

29°27'N

81°13'W

81°12'W

AIRPORT DIAGRAM

PALM COAST, FLORIDA
FLAGLER EXEC (FIN)