

WAAS CH 53436 W09A	APP CRS 101°	Rwy Idg TDZE Apt Elev	4732 434 435
--	------------------------	-----------------------------	---

RNAV (GPS) RWY 9

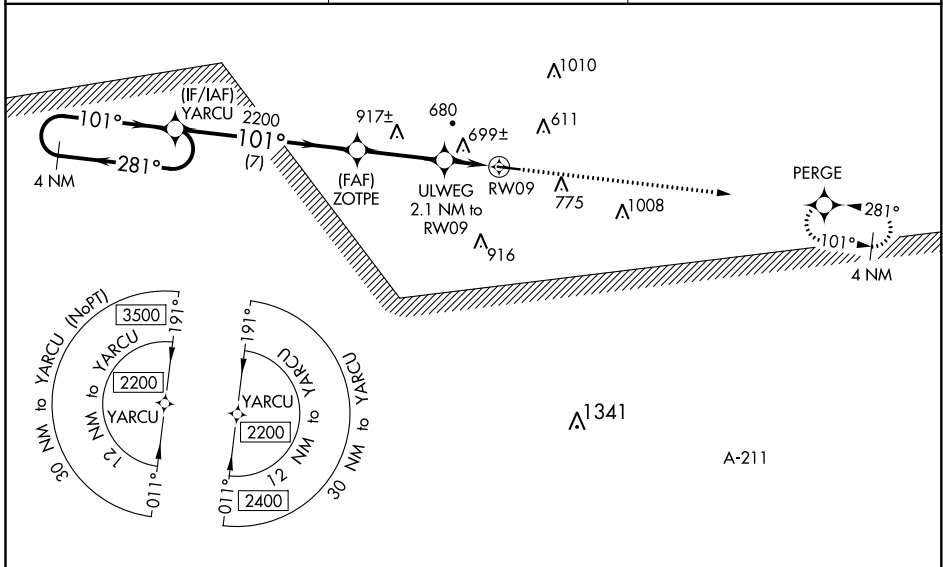
CLAYTON MUNI (11A)

RNP APCH.

▽ For uncompensated Baro-VNAV systems, LNAV/VNAV NA below -16°C or above 54°C.
△ NA When local altimeter setting not received, use Troy altimeter setting: increase LPV DA to 793, increase LNAV/VNAV DA to 1118 and all Cats visibility ¼ SM; increase all MDAs 80 feet and visibility LNAV Cats C and D ½ SM and Circling Cats C and D ½ SM. Rwy 9 helicopter visibility reduction below ¾ SM NA. Baro-VNAV and VDP NA when using Troy altimeter setting.

MISSED APPROACH:
Climb to 2200 direct PERGE and hold.

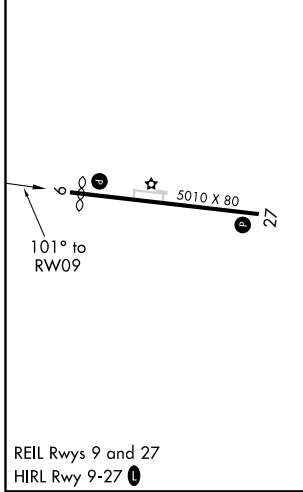
AWOS-3 118.775	CAIRNS APP CON ★ 121.1 319.25	CTAF 122.90
--------------------------	---	-----------------------



SE-4, 02 DEC 2021 to 30 DEC 2021

SE-4, 02 DEC 2021 to 30 DEC 2021

ELEV 435	TDZE 434
-----------------	-----------------



VGSI and RNAV glidepath not coincident (VGSI Angle 3.20/TCH 30).				2200 	PERGE
4 NM Holding Pattern YARCU				*LNAV only.	
2200 ← 281° → 101° → 2200				*1120	
GP 3.00° TCH 40				RW09	
7 NM 3.4 NM 0.6 NM 1.5 NM				*1.5 NM to RW09	
CATEGORY	A	B	C	D	
LPV DA	725-1		291 (300-1)		
LNAV/VNAV DA	1050-2½		616 (700-2½)		
LNAV MDA	960-1	526 (600-1)		960-1½	526 (600-1½)
C CIRCLING	1100-1	665 (700-1)		1100-1¾	1220-2½
			665 (700-1¾)	785 (800-2½)	